

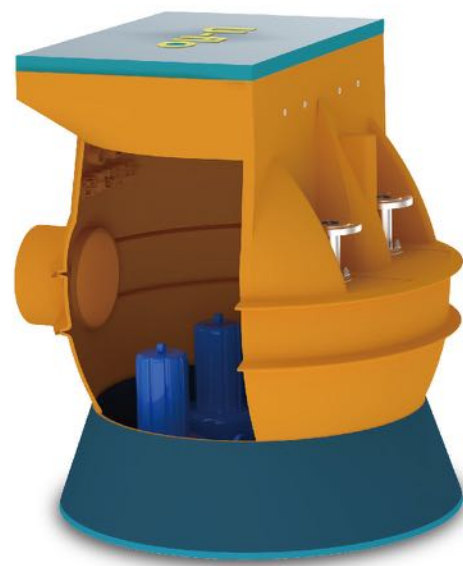
Environmental conditions 环境条件

- Prefabricated pumping stations shall be able to operate normally in the following environments:
- environmental temperature: $-25^{\circ}\text{C} \sim +40^{\circ}\text{C}$, if beyond the scope of corresponding measures must be taken;
 - relative humidity: no greater than 95% (20°C), without any condensation;
 - power supply: 220/380v, 50Hz;
 - elevation: not more than 2000m;
 - no conductive explosive dust, gas or steam corroding metal or damaging insulation and other media shall be found at the installation site of the equipment.



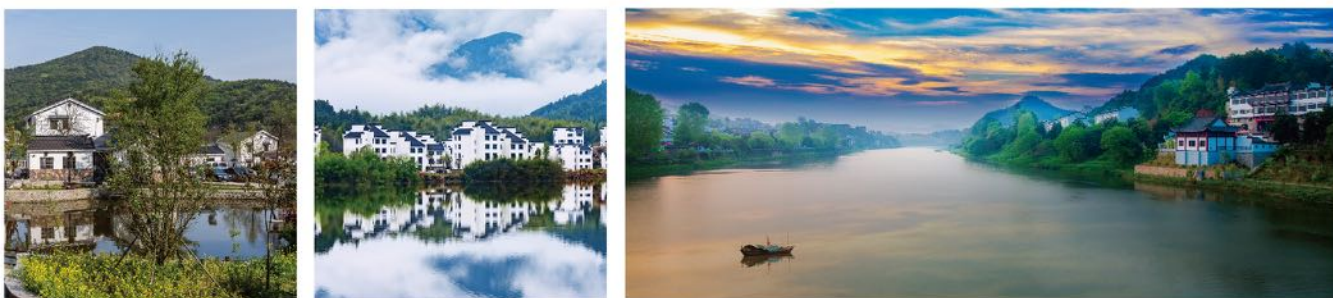
预制泵站应在下列条件下正常使用:

- 环境温度: $-25^{\circ}\text{C} \sim +40^{\circ}\text{C}$, 若超出此范围必须采取相应措施;
- 相对湿度: 不大于95% (20°C), 无凝露;
- 供电电源: 220/380V, 50Hz;
- 海拔高度: 不超过2000m;
- 设备安装地点无导电或爆炸性尘埃, 无腐蚀金属或破坏绝缘的气体或蒸汽及其他介质。



Application field 应用领域

- Rural sewage treatment
- 农村污水处理
- Rural sewage treatment Small flow single dwelling or foundation pit
- 小流量单个住宅或基坑

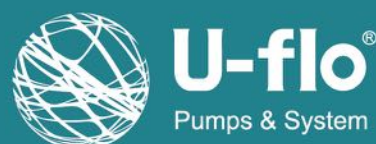


Pump station parameters 泵站参数

设备型号	流量 (m ³ /h)	扬程max (m)	功率 (KW)	设备有效容积
IEPS/IMPS/ISPS-XX/XX-XX-100-N2-X	5-20	5-20	1.1-1.5	100
IEPS/IMPS/ISPS-XX/XX-XX-200-N2-X	5-20	5-35	1.1-3.1	260
IEPS/IMPS/ISPS-XX/XX-XX-500-N2-X	10-30	5-35	3.1-7.5	500



www.u-flo.cn



联系我们

www.u-flo.cn

营销总部 Marketing Headquarters

ADD: 南京市江宁区清水亭西路51号-南京俊杰科创大厦9楼(211102)
Floor No.9, Nanjing Junjie Kechuang Building, No.51 Qingshui Ting West Road, Jiangning District, Nanjing (211102)
TEL: (86)25-52231105 / 52230907 / 52230921 / 84846376 FAX: (86)25-52230912 / 84676563

中国工厂 Chinese Factory

ADD: 南京市溧水经济开发区南区罗马工业园18号 (211200)
18# Rome Industry Park, Southern District, Lishui Economic Development Zone, Nanjing
TEL: (86) 25-56610801 / 56610802 / 56610803 / 56610805 / 56610815 FAX: (86) 25-56610806

销售服务热线: 400-100-8486 售后服务热线: 400-108-8170

IEPS / IMPS / ISPS INTEGRATED SEWAGE PUMPING STATION

一体化污水提升泵站



Copyright © 201905 U-flo Pumps

U-flo IEPS/IMPS/ISPS integrated sewage lifting pump stands on the basis of FRP material and replaces the material of the cylinder. It is made of polyethylene (PE), PP and stainless steel. The product is molded at one time and has high impact strength. Pressure bearing, zero penetration, corrosion resistance, strong applicability and lighter overall quality, shorter construction period. It is equipped with U-flo Italy imported submersible sewage pump, high performance and high efficiency. It can be used to collect and upgrade sewage, rainwater and wastewater, and is widely used in residential areas, rural sewage collection and discharge, and scenic drainage.

尤孚IEPS/IMPS/ISPS一体化污水提升泵站在玻璃钢材质的基础上进行筒体材质的更替, 分别采用聚乙烯 (PE)、PP、不锈钢材质, 产品一次性成型, 高抗冲击强度, 良好的承压性, 零渗透、耐腐蚀、适用性强且总体质量更轻便, 施工周期更短。配置尤孚意大利原装进口潜水污水泵, 高性能高效率。可用于收集和提升污水、雨水和废水, 广泛用于住宅区、农村污水收集和排放、景区排水等领域。

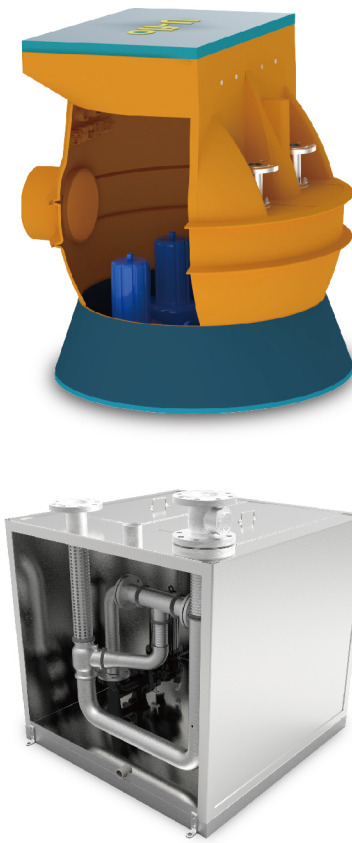
U-flo reserves the right to make modifications without notice.
U-flo 有权对产品进行修改, 恕不另行通知。



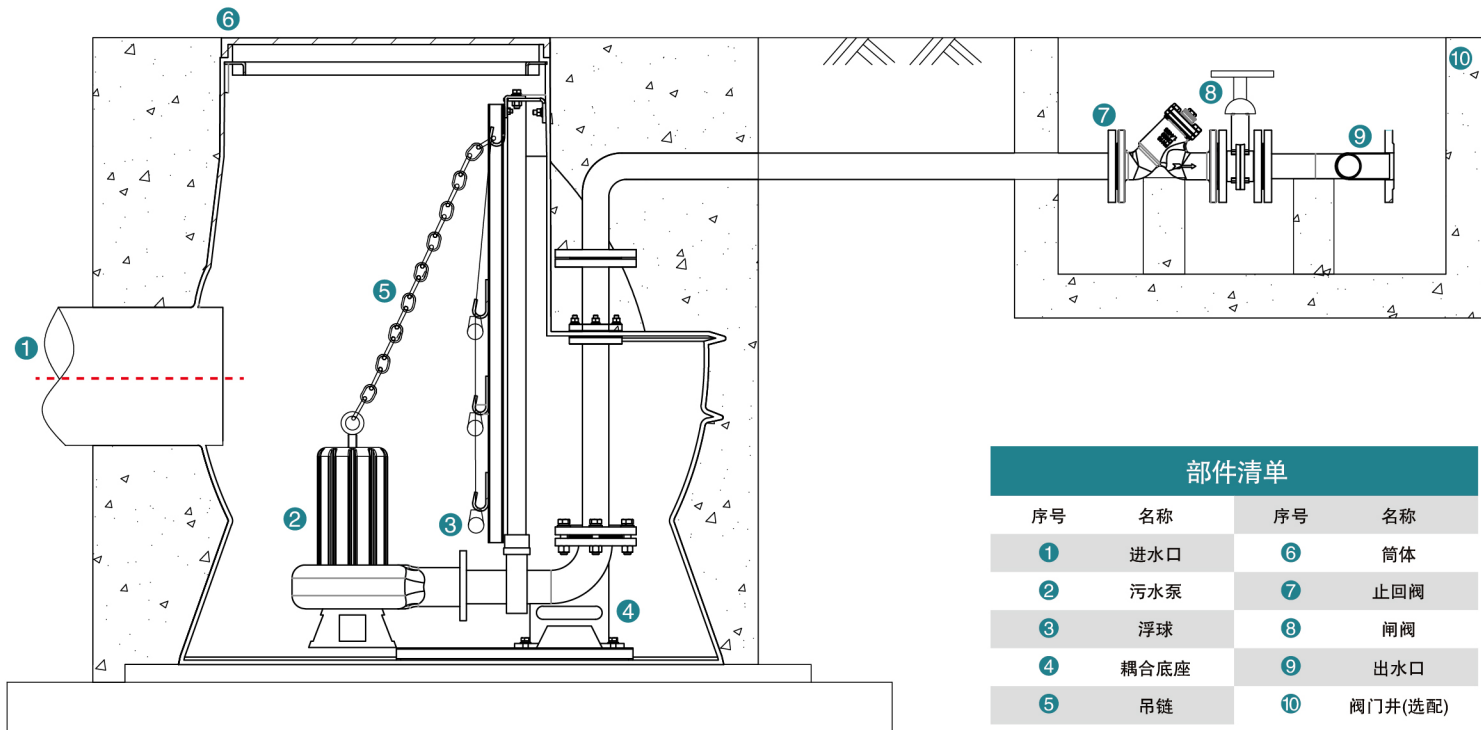
Model description 型号说明

IEPS / IMPS / ISPS-XX / XX-XX-XX-NX-X

- Control method
控制方式
 - Naoya D
直启 D
 - Frequency conversion F
变频 F
 - Soft start S
软启 S
- N is built-in type
N为内置式
 - 1 is single pump
1为单泵
 - 2 is double pump
2为双泵
- Effective volume(L)
有效容积(L)
- Head(m)
扬程(m)
- Single main pump motor power(KW)
单台主泵电机功率(KW)
- Single pump flow(m³/h)
单泵流量(m³/h)
- stainless steel material integrated
sewage pumping station
不锈钢材质一体化污水提升泵站
- PP material integrated sewage pumping station
PP材质一体化污水提升泵站
- PE material integrated sewage pumping station
PE材质一体化污水提升泵站



Installation diagram 安装示意图



部件清单			
序号	名称	序号	名称
1	进水口	6	筒体
2	污水泵	7	止回阀
3	浮球	8	闸阀
4	耦合底座	9	出水口
5	吊链	10	阀门井(选配)

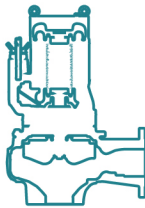
Performance characteristics 性能特点

Energy efficient 高效节能



Choose the best parameters to ensure efficient operation
可选择最佳的参数, 保证高效运行
Controls and optimizes system component performance to ensure reliable and efficient pumping station operation
可控制和优化系统各部件性能, 确保泵站可靠、高效地运行

Pump 水泵



Using VQ submersible sewage pump as the core of the pumping station, it runs efficiently and saves energy.
采用VQ潜水污水泵作为泵站核心, 高效运行, 节约能耗

Various impellers 多种叶轮



The core component submersible sewage pump is equipped with 8 different types of impellers
核心部件潜水污水泵配备8种不同形式的叶轮可选
Innovative T-type impeller hydraulic design
创新的T型叶轮水力设计

Small volume 体积小



Small footprint, high level of integration, easy to transport and install
占地面积小, 集成化程度高, 方便运输及安装

Short construction period 施工周期短



Integrated turnkey project, from factory prefabrication, foundation pit excavation to pump station commissioning completed in about 1 month
一体化交钥匙工程, 从工厂预制、基坑开挖到泵站调试完成仅须1月左右

ENERGY EFFICIENT 保护功能



Equipped with a safety alarm system to ensure safety and reliability
配备安全报警系统, 确保安全可靠
Increase overcurrent, lack of equal protection measures, after multiple tests
增加过流、缺相等保护措施, 经过多项测试

Material 材质



Made of polyethylene (PE), PP and stainless steel durable, crack-proof, environmentally friendly
采用聚乙烯(PE)、PP、不锈钢一次成型, 耐用、防破裂、环保

Surveillance system 监控系统



Intensive design, intelligent GPRS remote control, unattended
集约化设计, 智能化GPRS远程控制, 可实现无人值守

Annex 附件



Available in a variety of accessories and a variety of installation methods, can be customized
可提供多种附件及多种安装方式, 可接受定制

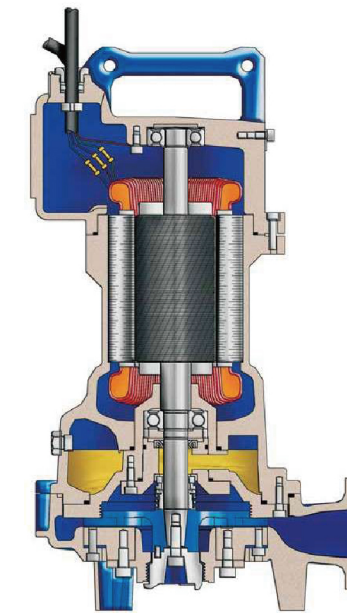
After-sales maintenance 售后维护



Control system and other components with high integration, reliable operation, regular inspection and after-sales maintenance service
控制系统等组件集成度高, 运行可靠, 定期检验且可提供售后维护服务

Key components 关键部件

Efficient submersible sewage pump 高效的潜水污水泵



Imported from Italy
100%意大利原装进口



Efficient
高效



High corrosion resistance
防腐性能高

Component 部件

- Closed waterproof motor, increase leakage probe, protect motor
- IE3 grade high efficiency motor saves energy
- 8 different types of impellers for a variety of operating conditions
- Available in cast iron, stainless steel, bronze or other materials, or special coating protection
- Complete protection

- 密闭式防水电机, 增加漏水探头, 保护电机
- IE3等级高效电机, 节约能耗
- 8种不同形式的叶轮, 适用多种工况
- 可选用铸铁、不锈钢、青铜等材质, 或特殊涂层保护
- 保护功能齐全

