

ZJDG系列智能静音叠压供水设备

ADDITIVE PRESSURE WATER SUPPLY EQUIPMENT



联系我们

| WWW.U-FLO.CN

营销总部 Marketing Headquarters

ADD: 南京市栖霞区仙尧路2号移动互联网产业基地7号楼(210046)

Building No.7, Mobile Internet Industry Base, No.2 xiayao RD, Qixia District, Nanjing

TEL: (86)25-52231105 / 52230907 / 52230921 / 84846376 FAX: (86)25-52230912 / 84676563

中国工厂 Chinese Factory

ADD: 南京市溧水经济开发区南区罗马工业园18号 (211200)

18# Rome Industry Park, Southern District, Lishui Economic Development Zone, Nanjing

TEL: (86) 25-56610801 / 56610802 / 56610803 / 56610805 / 56610815 FAX: (86) 25-56610806

销售服务热线: 400-100-8486 售后服务热线: 400-108-8170

南京方卓品牌设计 | www.njfad.com

ZJDG

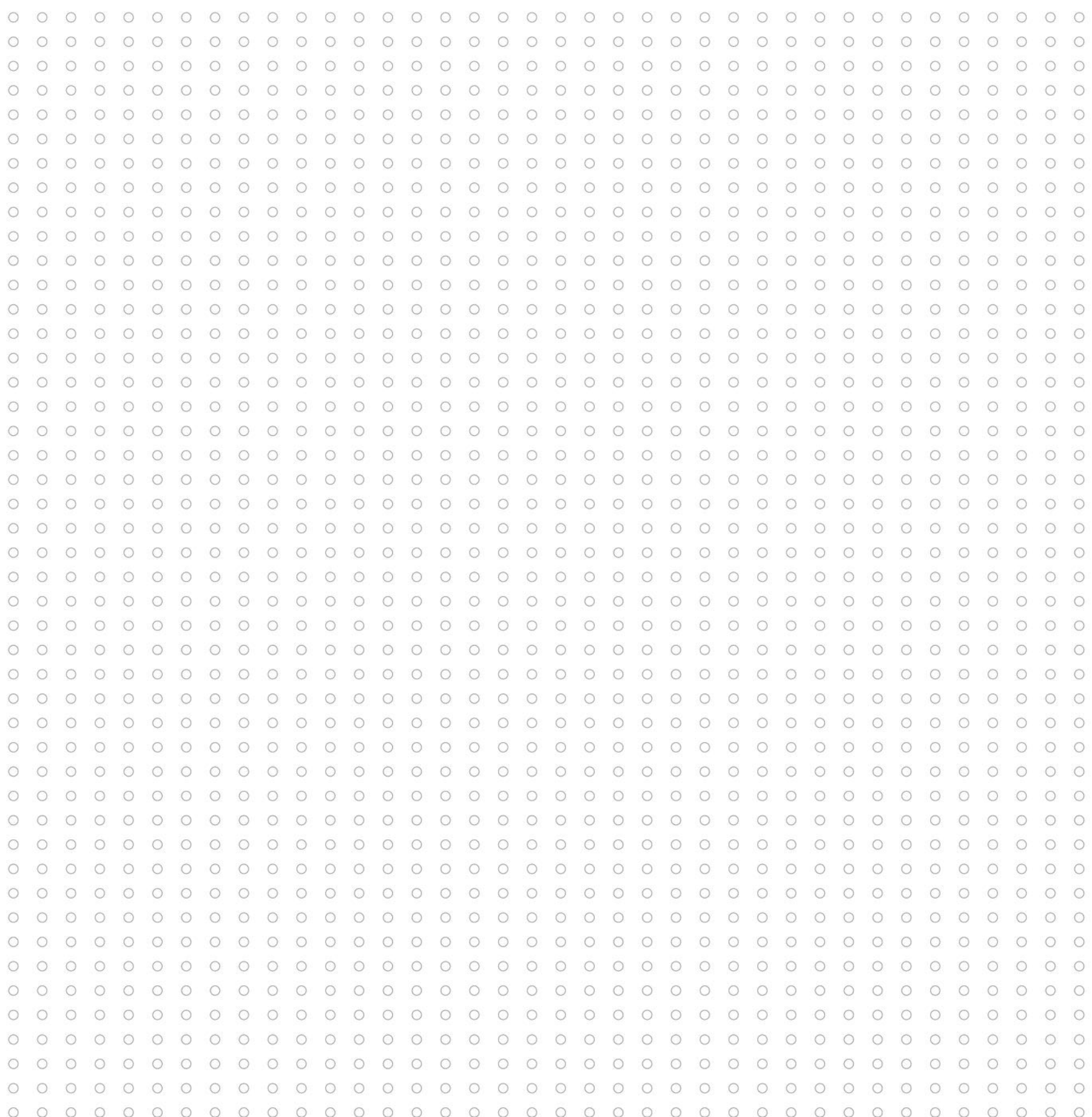
ADDITIVE PRESSURE

WATER SUPPLY

EQUIPMENT



Contents 目录



03/04 **COMPANY PROFILE** 公司介绍

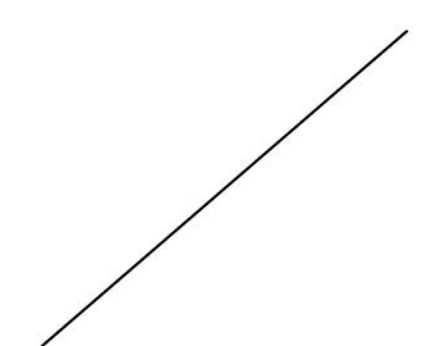
U.S. U-flo
美国尤孚

05/35 **PRODUCTS** 产品介绍

Introduction 产品简介
ZJGD(W) 智能静音叠压供水设备 (卧式)
ZJGD(L) 智能静音叠压供水设备 (立式)

36/37 **CUSTOMER SERVICE INFORMATION**

After-sales service Notes
售后服务须知





U-flo Pumps International LLC is a global water pump manufacturing and marketing company registered in Washington, USA. Our cooperated facilities are located in Italy, Japan, Taiwan and China. Our primary products include Deep-well Pumps, Above-ground Pumps, Sewage Pumps, Pumping Systems. They are widely used in power plants, paper mills, steel plants, agriculture irrigations, construction trades, industrial applications, mining operations, municipal utilities as well as oil/gas fields.

Integrity, Innovation, International

Since the first U-FLO water pump was manufactured, our people have been making unremitting endeavor to improve designs of the U-FLO water pump products. We apply the best industry practices and the best suitable materials for key components to the design and manufacturing of our pumps.

In addition to our state of art manufacturing facilities, we put a big effort on pump testing. Every product undergoes a rigorous testing and inspection process before being shipped to our customers. Our test facility incorporates a 12000 cubic meter (52,834 gallon) closed loop system with testing capacity of up to 600m³/h (2640GPM) with the maximum head of 200m (656ft), and 250 horsepower (dual voltages of 50Hz and 60Hz). Following a strict quality management system, all of our facilities are ISO 9001 and ISO 4001 certified.

Water is a vital part of our natural resources. While we always pursue the excellence of our products and services, we also take every step to promote environment-friendly and energy-saving solutions.

As a global pump manufacturer and supplier, U-FLO is committed to producing the finest water pumps in the world and continues to lead the way forward in the pumping industry.

U-FLO PUMPS INTERNATIONAL LLC是一家总部注册在美国华盛顿州的全球化水泵制造与销售公司。我们在意大利, 日本, 台湾和中国大陆地区均设有合作工厂。我们主要产品包括深井泵、地面泵、污水泵和供水设备。产品广泛应用于电厂、造纸厂、钢厂、农业灌溉、建筑、工业应用、矿山、市政以及油田领域。

诚信、创新、国际化

自第一台U-flo水泵出厂以来, 我们一直不懈努力, 致力于改进U-flo水泵的设计。我们以最高的行业要求和最佳材料设计和制造水泵。

在严抓工艺水平的同时, 我们还致力于水泵的测试。每一台水泵在出厂前均需要经过严格的测试和检验。我们的测试台含12000立方米(52,834加仑) 闭式循环系统, 最大测试流量达600m³/h(2640GPM),最高扬程为200m(656ft), 250马力(双电压50Hz、60Hz)。按照严格的质量管理体系, 我们所有的工厂均通过ISO9001和ISO14001认证。

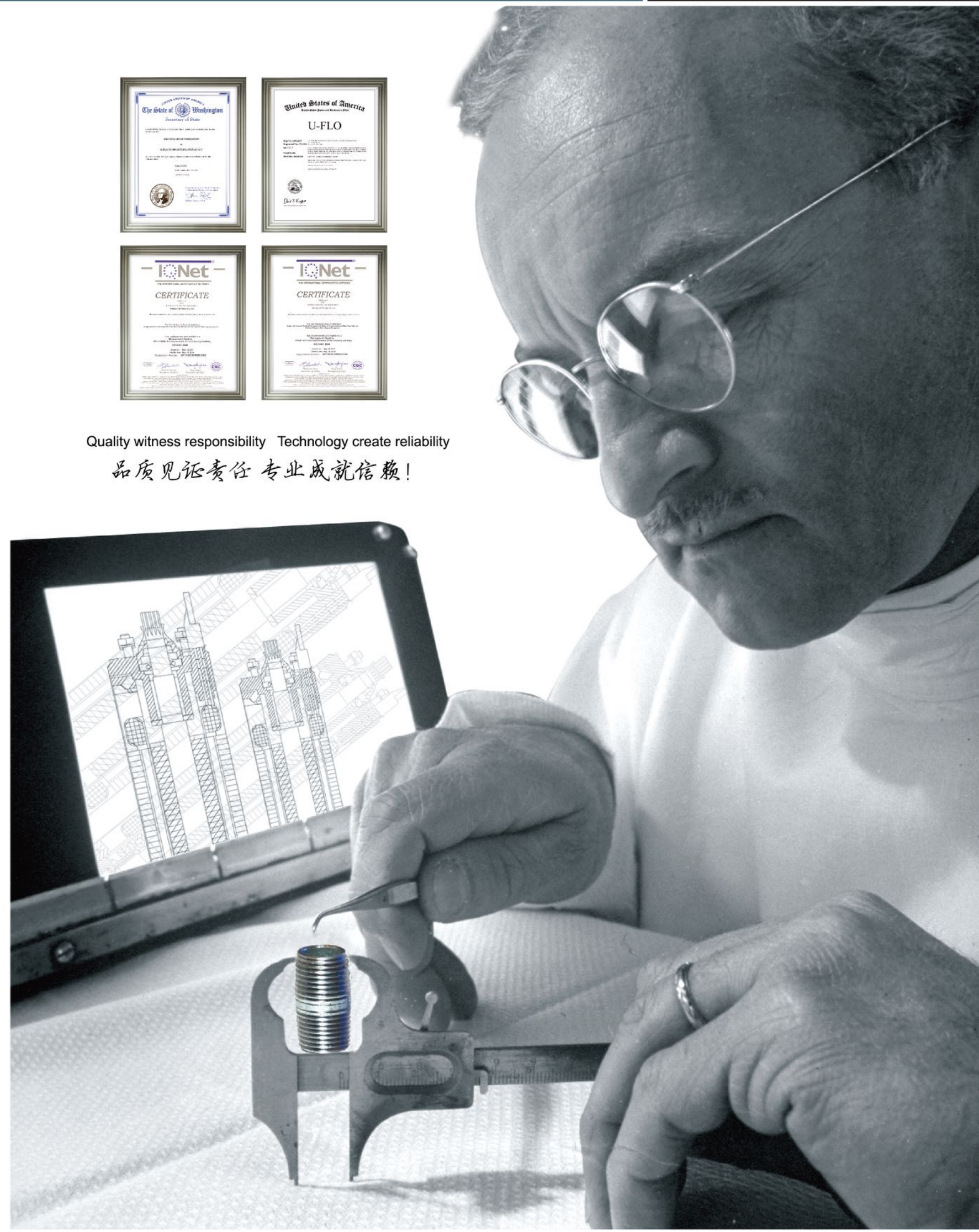
水是自然资源的重要组成部分, 我们在追求卓越的产品和服务的同时, 亦在努力推广环保和节能解决方案。

作为全球水泵制造商和供应商, U-flo致力于生产全球最好的水泵, 成为水泵行业的领跑者。



Quality witness responsibility Technology create reliability

品质见证责任 专业成就信赖!





尤孚泵业智能静音叠压供水设备

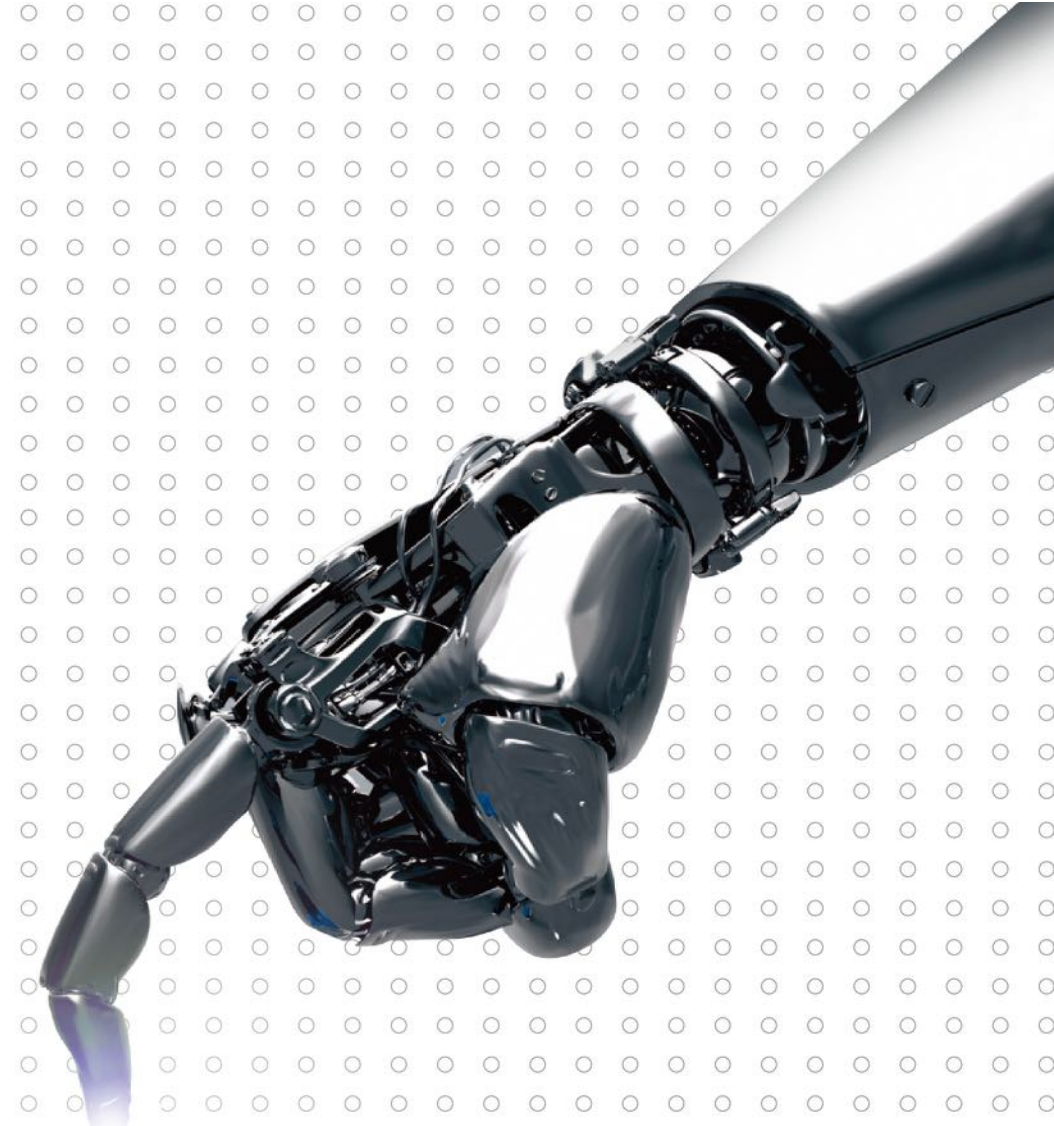
U-FLO PUMPS
ADDITIVE PRESSURE WATER SUPPLY EQUIPMENT

Design & production 设计和制造

It is present nowadays that the water pollution has intensified increasingly, and the safety of water quality has been a social problem. The traditional model of secondary pressurized water supply, as for the tank and pool has made a direct impact on the quality of water supply and even cause serious water pollution incidents. To solve this problem, we based on the traditional constant pressure water supply system, overcame the lack of traditional water supply mode successfully, and developed a new type of water supply equipment – Additive pressure water supply equipment.

水污染日益严重的今天，水质安全已经是个社会性的问题，传统的二次加压供水模式，由于水箱水池造成的污染已直接影响了供水的水质，甚至造成严重的水质污染事故。为了解决这个问题，我们在传统恒压供水系统的基础上，成功克服了传统供水方式的不足，研发出新型供水设备——智能静音叠压供水设备。

U-FLO reserves the right to make modifications without notice.
U-FLO 有权对产品进行修改，恕不另行通知。



Hydrosmart

Intelligent control system expert

系 / 统 / 智 / 能 / 控 / 制 / 专 / 家

ADDITIVE PRESSURE WATER SUPPLY EQUIPMENT



I、Introduction

Although the Additive pressure water supply equipment has been occupying the market gradually for its energy-saving and safety. But the device itself still exists some urgent problems: The whole original equipment occupy large area, complicated pipe valves, excessive noise in operation, unable to install in a wet environment; Although the original equipment also has the discontinuous flow function, it is unable to operate essentially with the closed system. It is still probably exists as the air enter the system and pollute the water. There are great limitations of the original equipment, as well as the high inlet requirements about the pressure and flow and it will unable to work while under the unstable situation extremely.

To above the deficiencies, U-FLO Pumps (Nanjing) Co., Ltd. has successfully developed a new generation of Additive pressure water supply equipment through unremitting efforts, and the new equipment has improved variety of the performance from the original equipment.

虽然管网叠压供水设备以节能环保安全卫生逐渐占据市场。但设备本身仍旧存在急需解决的问题：原设备整体占地面积大，管路阀门繁琐，运行噪音大，无法在潮湿的环境中安装使用；原设备虽也具有断流功能，但它实质上是不能全封闭系统运行的，仍然存在着空气进入系统污染水质的可能。原设备使用局限性很大，对进水压力流量要求很高，压力极不稳定的情况下无法使用。

针对以上的不足，尤孚泵业(南京)有限公司通过不懈努力，已成功研发出新一代智能静音叠压供水设备，新设备的问世大大改进了原设备的各种性能。

ZJDG 智能静音叠压供水设备 ADDITIVE PRESSURE WATER SUPPLY EQUIPMENT

II、PRODUCT ADVANTAGES 产品优势

1、Subversive design 颠覆式设计

- (1) 整套设备有超过200项创新，创造性地采用潜水泵设计，控制柜、阀门等部件均开发模具特殊设计；
 - (2) 控制部分采用抽屉式设计，设备整体真正实现一体化结构；
 - (3) 设备采用模块化设备，包括泵组、控制和稳流3大模块，安装方便，占地面积更小。
- (1) There are more than 200 innovations in one set equipment, creative use of submersible pump design, control cabinets, valves and other components are specially designed mold development;
- (2) control part drawer design, the device as a whole truly integrated structure;
- (3) The equipment is modular equipment, including pumps, controls and steady flow, total three major modules, easy installation, smaller footprint.

2、Mute 静音

采用SVP系列静音泵，可将噪音控制在35-40dB；
Using SVP series Silent pump, noise can be controlled at 35-40dB;

3、Energy saving 节能

利用市政管网压力，叠压供水。且采用潜水泵设计的供水设备，效率更高，节能效果更加明显；
Use of the municipal pipe network pressure, overlying water supply. And the use of submersible pumps designed for water supply equipment, more efficient, energy-saving effect is more obvious;

4、Saving investment 节省投资

无需水池或水箱占用空间，泵房也因此减少占地和空间。
由于杜绝了水质二次污染，因此无须增设消毒净化设备，节省投资。
Small-need no pool or tank, thus the pumping station will reduce the area and space.
There is no need to complete with additional disinfection and purification equipment due to the elimination of secondary water pollution, which saves the investment.

5、Stable 稳定

系统设计充分考虑高峰时段用水需求保证持续稳定供水，真正实现不间断供水，采用独特的设计理念，即使在停电时也能保证低区用户用水。
The desing seriously concerned about the water demand at the peak time to ensure a steady water supply, truly uninterrupted water supply,
Unique design concept, even in the blackout area when the user can ensure that low water.

6、Smart 智能

系统运行数据通过有线传输和无线传输方式传到我们的监控中心，轻松掌握系统运行情况并可进行远程控制。
The system operating date is transferred to monitoring center via wire and wireless transmission
Comfortable with system operation and can be remotely controlled.

Company

Products

ZJDG-W

ZJDG-L

Service

ZJDG 智能静音叠压供水设备

ADDITIVE PRESSURE WATER SUPPLY EQUIPMENT

III、Comparison Table between traditional water tank water supply equipment and additive pipe network pressure water supply equipment

传统水池供水设备与管网叠压供水设备对比表

Comparison 对比	Traditional water supply equipment 传统给水设备	U-FLO additive pipe network pressure water supply equipment U-FLO 系列管网叠压供水设备
Construction scale 建设规模	Large—Need to build a water storage tank, coupled with a set of booster equipment 大 —— 必须建设水池储水箱,再加一套传统的加压设备。	Small—No need to build a water storage tanks, just need a set of additive pipe network pressure water supply equipment 小 —— 无需建设水池储水箱,只需要一套管网叠压设备。
Investment scale 投资规模	Large—investment in construction of the pool and tank even more than that in water supply equipment. The area and height of pumping station is enlarged due to the pool or tank which increases construction investment. The matched disinfection and purification equipment are needed for preventing water pollution which increases capital investment. The routine cleaning and disinfection of pool or tank increases the cost for manpower and routine maintenance. It's uneconomical due to the huge expense of water and electricity by increasing the pool and tank. 大 —— 修建水池水箱, 投资规模甚至超过供水设备的投资。 泵房面积及高度因水池或水箱而加大或加高, 土建投资规模加大。为防止水质污染, 必须配套消毒净化设备, 增加资金投入。由于水池水箱定期清洁, 需增加人力开支及日常清洗消毒维护费用。由于增设水池或水箱浪费水电开支非常巨大, 使用不经济。	Small—no need to build pool or tank, saving the total investment. The construction scale of pumping station is small which saves more investment. There is no need to complete with additional disinfection and purification equipment due to the elimination of secondary water pollution, which saves the investment. The expenses of manpower, routine cleaning and disinfection for pool and tank will be saved. It's economical and practical due to the node caused by the dormancy of additive pipe network pressure equipment and the cancellation of pool or tank which saves more water and electricity. 小 —— 不需要修建水池或水箱, 节省总投资。泵房建设规模小, 投资更省。由于杜绝了水质二次污染, 因此无须增设消毒净化设备, 节省投资。节省水池或水箱定期清洗消毒的人力开支及日常维护费用。由管网叠压设备休眠产生的节点加上取消水池水箱带来的节水省电, 节省开支, 非常可观, 使用经济。
Occupied area 占地面积	Large—it is terrible that the pool or tank occupies or waste a lot of space, while the pumping station will be enlarged and the equipment will become larger. 大 —— 水池或水箱白白占用大量的空间, 泵房也因此加大加高, 设备越大, 占地及浪费空间越可怕。	Small—need no pool or tank, thus the pumping station will reduce the area and space. 小 —— 无需水池或水箱占用空间, 泵房也因此减少占地和空间。

ZJDG 智能静音叠压供水设备

ADDITIVE PRESSURE WATER SUPPLY EQUIPMENT

Water model 给水模式	Complex—Water all flow into the pool or tank, then uses the water supply equipment to secondary booster. 复杂 —— 自来水全部流进水池或水箱, 然后再利用供水设备二次加压。	Simple—Just connect the two water pipes between the tap water and additive pressure water supply equipment. 简单 —— 只需将自来水管与供叠压供水设备进水管接上即可。
Water protection 给水保障	Insecurity—Once the power failure, water equipment stop to supply and the system will break down completely. 无保障 —— 一旦停电, 设备停止供水, 系统完全瘫痪。	Security ——Once the power failure, it can also meet the requirement of part or all users with the tap-water pipe network pressure. 有保障 —— 一旦停电, 还可以利用自来水原有管网压力满足部分或全部供水。
Water Quality 给水质量	Secondary pollution—Due to the increasing water chain with the pool and tank, the dust, insects, mouse and other pests will easy to access, as well as the growth of cochineal and algae inside, which will cause serious secondary pollution. 二次污染 —— 由于供水环节增加水池或水箱, 灰尘、昆虫、老鼠等有害物容易进入, 内部也容易滋生红虫、藻类, 对水质造成严重二次污染。	Non-pollution—Due to the completely closed system from the water pipe network and additive pressure water supply equipment, it completely cuts off sources of pollution, prevents secondary pollution and ensures good water quality. 无污染 —— 由于自来水管网与叠压供水设备形成完全封闭系统, 彻底隔断污染源, 杜绝二次污染, 保证水质卫生洁净。
Water-saving comparison 节水对比	Waste—It is easy for the pool and tank to take leaking, evaporation, overflow. The cleaning and disinfection will waste an enormous amount of water unnecessarily. 浪费 —— 水箱水池容易发生泡冒滴漏、蒸发、溢流及清洗、消毒都会造成大量不必要的水资源浪费。	Saving—All—closed system, prevent leaking, evaporation and overflow, as well as no cleaning and disinfection. The saving effect is obvious. 节约 —— 全封闭系统, 杜绝跑冒滴漏, 更没有蒸发溢流, 也不用清洗消毒, 节约效果明显。
Power-saving comparison 节电对比	Waste—secondary booster is just what the name implies: the pressure of the tap water will turn into zero after flow into the pool or tank. The water supply equipment needs to start from the zero pressure until meet the water supply pressure. The high head and power will waste the electric energy. The cleaning and disinfection of tank will also need to consume the electric energy. 浪费 —— 二次加压, 顾名思义: 自来水放入水池或水箱后压力变为自然零压, 供水设备需要从零水压开始, 加到满足供水压力, 水泵扬程高、功率大、浪费电能。水箱清洗消毒也需要消耗电能。	Save—additive pipe network pressure, i.e. use the original water pipe network pressure added with the pressure of additive pipe network pressure water supply equipment. The pump with low head and low power can meets the requirement and save electricity. When the tap-water pressure meets the water supply requirement, the equipment changes into dormancy and the node effect is obvious. 节约 —— 管网叠压, 一目了然; 利用原有自来水管网压力与管网叠压供水设备压力有效叠加, 水泵扬程低、功率小, 省电。当自来水压力可以满足时设备休眠, 节点效果明显。
Installation comparison 安装对比	Complex—the pool or tank shall be built which enlarged the work amount and period. The control, overflow and discharge of the pool or tank are easy to failure. 复杂 —— 必须修建水池或水箱, 工程量大, 施工工期长, 水池或水箱进入控制、溢流排放等环节多容易出问题。	Simple—No need to build tank or pool. It's just need to connect the inlet and outlet pipe of the equipment to the tap-water pipe which shortens the work period and easy to install. 简便 —— 无需修建水箱或水池, 设备整装出厂只需接好进出水管即可, 工期短, 安装简便易行。

Company

Products

ZJDG-W

ZJDG-L

Service

ZJDG 智能静音叠压供水设备

ADDITIVE PRESSURE WATER SUPPLY EQUIPMENT

IV、Features of U-flo additive pipe network pressure water supply equipment

U-flo系列管网叠压供水设备的特点

Municipal pipe network Protection technology 市政管网保护技术 The combined action of system technology, such as pressure-stabilizing balance, negative pressure induction, signal collection, energy regulation etc. make the operation of these equipments more efficient, energy-saving, environmental protection and practical while through the whole control of scientific and advanced electronic control system.
由稳压平衡、负压感应、信号采集、节能稳压等系统技术综合作用,通过科学先进的电控系统整体调控,使设备运行更加高效、节能、环保、实用。

Completely non-negative 完全无负压 1. Equipped with advanced Equipped with advanced digital display self balanced negative pressure eliminate device, which will help the equipment to prevent and eliminate the negative pressure caused by operation.
2. Equipped with the municipal pipe network protector, which has perfect control of the negative pressure test. It will monitor, control, early warning and eliminate before the generation of negative pressure rather than passive elimination.
1. 装有先进的数显式自平衡型负压消除装置,对设备运行产生的负压起预防和消除作用。
2. 设备装有市政管网保护器,具有完善的负压检验控制能力,能及时在负压产生之前监控预警并消除,绝不是在负压产生之后被动消除。

No secondary pollution 无二次污染 Due to the connection between equipment and water pipes, outlet connect with the water supply system directly and no pool or tank, the system becomes a truly closed-loop system. Mice, insects, ants, cochineal, etc. which may cause pollution of the water was completely cut off. It will ensure the water quality to meet the drinking water standard, which will completely avoid secondary pollution.
因设备与自来水管连接,出水直接与供水系统连接,中间没有水池、水箱等设施,使系统成为一真正的闭环系统,老鼠、昆虫、蚂蚁、红虫等可能对水质造成污染源的源头被彻底切断,保证水质满足生活饮用水标准,因此完全避免了水质的“二次污染”。

Water saving 节水 The equipment do not need the intermediate equipment such as pool or tank, etc. which can reduce evaporation, avoid regular cleaning, thus will not cause the water loss.
本设备不用水池水箱等中间设备,减少蒸发,避免了定期清洗,也不会造成水的流失。

ZJDG 智能静音叠压供水设备

ADDITIVE PRESSURE WATER SUPPLY EQUIPMENT

Energy saving 节能

1. Municipal pipe network protection system connects the municipal pipe network with the pump inlet. The municipal inlet pressure added with pump outlet pressure make a good effect on energy saving.
 2. When the tap water pressure can meet the setting pressure, the equipment will automatically shutdown and the municipal pipe network will supply water directly.
 3. Adopt energy-saving pressure-stabilizing device. When the equipment on the small flow working state at night, it will stop pump and supply water after the adjustment of pressure compensation which makes a good effect on energy saving.
 4. Reasonable design, properly configuration, excellent component selection make the overall operation energy-efficient.
1. 市政管网保护系统把市政管网与水泵吸水口连接,使市政进水压力与水泵出水压力叠加,节能效果特别显著。
2. 自来水压力能够满足设定压力时,设备自动停机直接由市政管网供水。
3. 采用节能稳压装置夜间小流量工作状态时,设备进行压力补偿调整后停泵供水,节能效果明显。
4. 设备合理设计、配置得当、选件精良、整体工作高效节能。

Save investment 节省投资

No need to build pool or tank which saves the space. No need to install special equipment for cleaning and disinfection which greatly reduces the construction and equipment investment as well as labor expense and material costs.
无需建设水池水箱,节省空间,也不必安装专门的清洁和消毒设备,大大减少土建和设备投资,同时也省去了这部分设施维护的人工开支和材料费用,具有良好的经济性。

Convenient installation and maintenance 安装维护方便

The integral assembled equipment, all you have to do is to fix the common base and connect the inlet pipe and outlet pipe while installation. Connected the power and signal lines, the equipment will be automatic operation unattended. The equipment is of no pollution, no noise, no vibration, therefore it will not limited by the installation site, which makes the installation easier.
设备为整体组装式,安装时只需固定公共底座,连接总进水管、总出水管,即安装完成。接通电源和信号线,设备即可在无人看管的情况下全自动运行,设备本身无污染、无噪音、无震动、因此不受安装地点的限制,使安装更加简单易行。

设备功能齐全 Complete functions

U-flo Water Supply Windows Software developed by our company, adopt the advanced programmable technology, high-end variable frequency technology, human-computer interface technology, combined with modern advanced PID fuzzy control theory and remote monitoring. Ensure the equipment is of complete functions, outstanding features and advantages.
自行研制开发 U-flo 供水视窗软件,采用先进的可编程序技术、变频高端技术、人机界面技术,结合现代先进的模糊 PID 控制原理,远程监控。确保设备功能齐全并具有显著特点和优点。

Company

Products

ZJDG-W

ZJDG-L

Service

ADDITIVE PRESSURE WATER SUPPLY EQUIPMENT



ZJDG
(W)

I、Introduction

U-flo latest patented product solved the problems of large occupied area and high noise which existed in the old equipment. The unique integration structure (integrate the pressure tank, pipe and electric control systems), the unique municipal pipe network protection system and the unique Intelligent Control system constitute the new generation of Intelligent mute inner of pipe additive pressure water supply equipment.

尤孚最新专利产品，解决了原叠压设备占地大、噪音大的问题。以独特的一体化结构（把稳流罐、泵稳流套、稳压罐及电控系统集成于一体）独特的市政管网保护系统独特的智能控制系统，构成了新一代的智能静音管中型叠压供水设备。

It is mainly used in the water supply of the new tall building, high-rise residential community, office buildings, hotels, schools, and other civil constructions, the renovation projects of the pneumatic, pool, water tank water supply equipment. Especially suitable for the water supply of the high-grade residential, Villa community, where require the high environmental requirements, no noise, no vibration, small space cover and high configuration.

主要适用于新建的高层、小高层住宅小区、办公楼、宾馆、学校等民用建筑的生活用水；原有气压式、水池、水箱式供水设备的改造工程。特别适用于使用环境要求高、无噪音、无震动、占地小、配置高的高档住宅、别墅小区的生活用水。

ZJDG (W) 智能静音叠压供水设备 (卧式)

ADDITIVE PRESSURE WATER SUPPLY EQUIPMENT

II、Model Instruction 型号意义

ZJDG(W)/(L)-XX-XX/X

X	Pump quantity	水泵数量
XX	Head	扬程
XX	Single pump rated flow	单台泵额定流量
ZJDG(W)	Additive Pressure Water Supply Equipment(Horizontal)	智能静音叠压供水设备 (卧式)
ZJDG(L)	Additive Pressure Water Supply Equipment(Vertical)	智能静音叠压供水设备 (立式)

III、Performance parameters 性能参数

○Flow Range: 0-1000m ³ /h	○流量范围: 0-1000m ³ /h
○Pressure range: 0-2.5MPa	○压力范围: 0-2.5MPa
○Pressure regulation accuracy ≤0.01 MPa	○压力调节精度: ≤0.01 MPa
○Single motor capacity ≤110KW	○电机单机容量: ≤110KW
○Power: 380V ± 10% 50HZ ± 5%	○电源: 380V ± 10% 50HZ ± 5%
○Temperature: 0 - 40°C	○温度: 0 - 40°C
○Humidity: can be run in wet conditions (except electronic control parts)	○湿度: 可在潮湿环境下运行 (电控部分另外布置)
○Environment: Indoor non-corrosive, non-mist, non-conductive dust	○环境: 室内无腐蚀性、无油雾、无导电尘埃。

IV、CONFIGURATION 配置

1. Pump: Adopt U.S. U-FLO stainless steel SVP Safe-noise pump, U.S. U-flo Full stainless steel encapsuled water-filled motor.	1. 水泵: 选用美国 U-FLO 全不锈钢 SVP 静音泵, 美国 U-FLO 全不锈钢屏蔽式充水电机。
2. Frequency Converter: ABB (Standard), DANFOSS/FUJI(Optional)	2. 变频器: ABB(标配), 丹佛斯/富士(选配)
3. Pressure sensor: DANFOSS(Standard), COLLHIGH(Optional) Electric contact pressure gauge	3. 压力传感器: 丹佛斯(标配), 昆仑海岸(选配) 电接点压力表
4. Touchscreen: VEINVIEW(Standard), SIEMENS(Optional)	4. 触摸屏: VEINVIEW(标配), SIEMENS(选配)
5. Programmable logic controller module: SIEMENS(Standard), MITSUBISHI(Optional)	5. 可编程控制器模块: SIEMENS(标配), 三菱(选配)
6. Components such as electrical equipment and switches: SCHNEIDER(Standard), SIEMENS(Optional)	6. 电气、开关等元器件: SCHNEIDER(标配), SIEMENS(选配)
7. Control cabinet: 304 stainless steel custom drawer type	7. 控制柜: 304 不锈钢定制抽屉式控制柜
8. Pressure tank: ITALY AQUAFILL	8. 压力罐: 意大利 AQUAFILL
9. Valve: U-FLO all stainless steel custom integrated valve	9. 阀门: U-FLO 全不锈钢定制一体式阀门。

Water supply equipment can be equipped with remote monitoring module, monitoring interface provided by our company are divided into two types of Ethernet, wireless network; Ethernet interface, the user needs to provide 1 broadband network; wireless network interface, users need to provide mobile SIM card, and ensure the equipment environment mobile signal coverage. Any one form, the user can be self monitoring, and we also can provide monitoring. Monitoring content includes: the pipe pressure, pump status, current frequency, remote start stop, remote reset, etc.

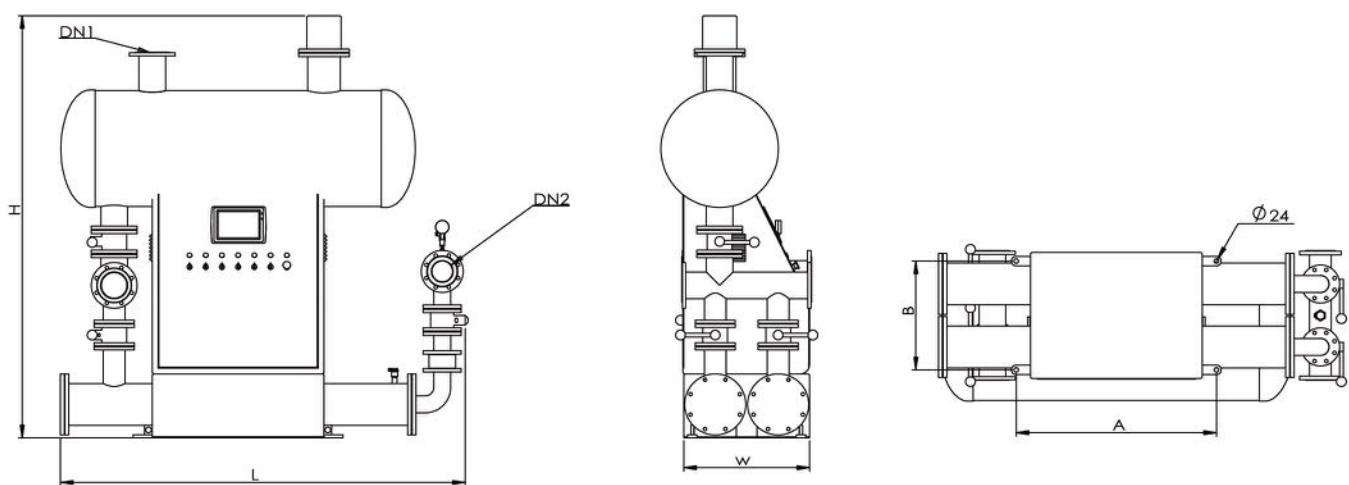
供水设备可选配远程监控组件, 我公司提供的监控接口分为以太网、无线网两种形式; 选择以太网接口, 用户需要提供 1 根开通宽带的网线; 选择无线网接口, 用户需提供移动 SIM 卡, 并保证设备环境有移动信号覆盖。任意一种形式, 用户均可自行监控, 且我公司也可以代为监控。监控内容包含: 管网压力、水泵状态、当前频率、远程启停、远程复位等。

ZJDG (W) 智能静音叠压供水设备 (卧式)

ADDITIVE PRESSURE WATER SUPPLY EQUIPMENT

INSTALLATION INSTRUCTION 安装示意图

ZJDG(W)一用一备



BASIC PARAMETERS 基本参数

ZJDG SERIES(一用一备)

序号	参考户数	设备型号	单泵型号	单泵功率	泵+电机长度 (mm)	总流量 (m³/h)	扬程 (m)					外形尺寸(mm) L*W*H	地脚螺栓中心距 A*B (mm)	地脚螺栓	进出口法兰尺寸		稳流罐尺寸 (mm)
							4.2	4.6	5	5.4	5.8				进口DN1	出口DN2	
1	15	ZJDG(W)-5-15/2	SVP-504	0.37KW	485	扬程 (m)	18	17	15	13	10	2000*780*2360	960*405	4-M24	65	50	Φ600*1600
2		ZJDG(W)-5-27/2	SVP-506	0.55KW	557		30	29	27	28	20						
3		ZJDG(W)-5-34/2	SVP-508	0.75KW	619		38	36	34	30	25						
4		ZJDG(W)-5-52/2	SVP-512	1.1KW	748		58	54	52	48	40						
5		ZJDG(W)-5-68/2	SVP-517	1.5KW	915		77	72	68	62	53						
6		ZJDG(W)-5-85/2	SVP-521	1.8KW	1011		97	92	85	78	67						
7		ZJDG(W)-5-96/2	SVP-525	2.2KW	1103		113	105	96	91	78						
8		ZJDG(W)-5-135/2	SVP-533	3KW	1402		155	145	135	124	103						

序号	参考户数	设备型号	单泵型号	单泵功率	泵+电机长度 (mm)	总流量 (m³/h)	扬程 (m)				外形尺寸(mm) L*W*H	地脚螺栓中心距 A*B (mm)	地脚螺栓	进出口法兰尺寸		稳流罐尺寸 (mm)
							6	7	8	9				进口DN1	出口DN2	
1	25	ZJDG(W)-8-20/2	SVP-805	0.75KW	697	扬程 (m)	23	22	20	17	2000*780*2360	960*405	4-M24	65	50	Φ600*1600
2		ZJDG(W)-8-28/2	SVP-807	1.1KW	826		32	30	28	25						
3		ZJDG(W)-8-40/2	SVP-810	1.5KW	1014		46	44	40	35						
4		ZJDG(W)-8-48/2	SVP-812	1.8KW	1110		56	53	48	42						
5		ZJDG(W)-8-59/2	SVP-815	2.2KW	1244		68	65	59	52						
6		ZJDG(W)-8-72/2	SVP-818	3KW	1501		82	78	72	63						

序号	参考户数	设备型号	单泵型号	单泵功率	泵+电机长度 (mm)	总流量 (m³/h)	扬程 (m)					外形尺寸(mm) L*W*H	地脚螺栓中心距 A*B (mm)	地脚螺栓	进出口法兰尺寸		稳流罐尺寸 (mm)
							6	7	8	9	10				进口DN1	出口DN2	
1	35	ZJDG(W)-9-28/2	SVP9-5	2.2KW	896	扬程 (m)	50	44	28	20	20	2100*780*2360	960*405	4-M24	65	50	Φ600*1600
2		ZJDG(W)-9-51/2	SVP9-9	3.7KW	1241		84	81	51	45	45						
3		ZJDG(W)-9-77/2	SVP9-13	5.5KW	1455		121	115	77	60	60						
4		ZJDG(W)-9-88/2	SVP9-14	5.5KW	1491		138	121	88	70	70						
5		ZJDG(W)-9-110/2	SVP9-18	7.5KW	1596		170	155	110	83	83						

ZJDG (W) 智能静音叠压供水设备 (卧式)

ADDITIVE PRESSURE WATER SUPPLY EQUIPMENT

BASIC PARAMETERS 基本参数

ZJDG SERIES(一用一备)

序号	参考户数	设备型号	单泵型号	单泵功率	泵+电机长度 (mm)	总流量 (m³/h)	扬程 (m)					外形尺寸(mm) L*W*H	地脚螺栓中心距 A*B (mm)	地脚螺栓	进出口法兰尺寸		稳流罐尺寸 (mm)
							11	12	13	14	15				进口DN1	出口DN2	
1	50	ZJDG(W)-13-26/2	SVP13-3	2.2KW	824	扬程 (m)	30	28	26	21	18	2100*780*2360	960*405	4-M24	65	50	Φ600*1600
2		ZJDG(W)-13-43/2	SVP13-5	3.7KW	1097		50	46	43	36	30						
3		ZJDG(W)-13-54/2	SVP13-6	3.7KW	1133		65	58	54	45	40						
4		ZJDG(W)-13-74/2	SVP13-8	5.5KW	1260		80	77	74	63	55						
5		ZJDG(W)-13-99/2	SVP13-11	7.5KW	1344		110	102	99	82	75						
6		ZJDG(W)-13-111/2	SVP13-12	7.5KW	1380		127	115	111	95	80						

序号	参考户数	设备型号	单泵型号	单泵功率	泵+电机长度 (mm)	总流量 (m³/h)	扬程 (m)				外形尺寸(mm) L*W*H	地脚螺栓中心距 A*B (mm)	地脚螺栓	进出口法兰尺寸		稳流罐尺寸 (mm)
							13	15	17	19				进口DN1	出口DN2	
1	80	ZJDG(W)-17-30/2	SVP17-4	3KW	968	扬程 (m)	42	36	30	24	2100*780*2360	960*405	4-M24	65	50	Φ600*1600
2		ZJDG(W)-17-40/2	SVP17-5	3KW	1016		53	47	40	30						
3		ZJDG(W)-17-47/2	SVP17-6	3.7KW	1172		62	55	47	36						
4		ZJDG(W)-17-51/2	SVP17-7	5.5KW	1251		69	60	51	40						
5		ZJDG(W)-17-59/2	SVP17-8	5.5KW	1298		79	70	59	45						
6		ZJDG(W)-17-65/2	SVP17-9	5.5KW	1346		86	75	65	50						
7		ZJDG(W)-17-70/2	SVP17-10	5.5KW	1346		93	80	70	54						
8		ZJDG(W)-17-74/2	SVP17-11	7.5KW	1417		100	87	74	58						
9		ZJDG(W)-17-82/2	SVP17-13	7.5KW	1503		113	98	82	65						
10		ZJDG(W)-17-95/2	SVP17-14	7.5KW	1550		131	113	95	75						
11		ZJDG(W)-17-108/2	SVP17-15	11KW	1668		149	130	108	85						

序号	参考户数	设备型号	单泵型号	单泵功率	泵+电机长度 (mm)	总流量 (m³/h)	扬程 (m)				外形尺寸(mm) L*W*H	地脚螺栓中心距 A*B (mm)	地脚螺栓	进出口法兰尺寸		稳流罐尺寸 (mm)
							15	20	25	30				进口DN1	出口DN2	
1	150	ZJDG(W)-25-20/2	SVP25-2	2.2KW	761	扬程 (m)	26	24	20	15	2100*780*2360	960*405	4-M24	100	80	Φ600*1600
2		ZJDG(W)-25-28/2	SVP25-3	3KW	949		40	35	28	20						
3		ZJDG(W)-25-37/2	SVP25-4	3.7KW	1070		53	46	37	25						
4		ZJDG(W)-25-44/2	SVP25-5	5.5KW	1203		63	55	44	30						
5		ZJDG(W)-25-50/2	SVP25-6	5.5KW	1260		74	64	50	35						
6		ZJDG(W)-25-57/2	SVP25-7	7.5KW	1284		84	72	57	41						
7		ZJDG(W)-25-70/2	SVP25-8	7.5KW	1341		97	85	70	50						
8		ZJDG(W)-25-77/2	SVP25-9	9.2KW	1423		107	95	77	56						
9		ZJDG(W)-25-88/2	SVP25-10	11KW	1525		120	106	88	66						
10		ZJDG(W)-25-94/2	SVP25-11	11KW	1582		130	115	94	70						
11		ZJDG(W)-25-104/2	SVP25-12	15KW	1694		145	127	104	75						
12		ZJDG(W)-25-115/2	SVP25-13	15KW	1751		160	140	115	84						

序号	参考户数	设备型号	单泵型号	单泵功率	泵+电机长度 (mm)	总流量 (m³/h)	扬程 (m)				外形尺寸(mm) L*W*H	地脚螺栓中心距 A*B (mm)	地脚螺栓	进出口法兰尺寸		稳流罐尺寸 (mm)
							22	26	30	34				进口DN1	出口DN2	
1	240	ZJDG(W)-30-18/2	SVP30-2	2.2KW	761	扬程 (m)	22	20	18	14	2100*780*2360	960*405	4-M24	100	80	Φ600*1600
2		ZJDG(W)-30-26/2	SVP30-3	3.7KW	1013		35	31	26	20						
3		ZJDG(W)-30-35/2	SVP30-4	5.5KW	1146		46	41	35	27						
4		ZJDG(W)-30-44/2	SVP30-5	7.5KW	1170		58	51	44	35						
5		ZJDG(W)-30-53/2	SVP30-6	7.5KW	1227		68	61	53	43						
6		ZJDG(W)-30-63/2	SVP30-7	9.2KW	1309		83	73	63	51						
7		ZJDG(W)-30-72/2	SVP30-8	9.2KW	1366		94	84	72	59						
8		ZJDG(W)-30-82/2	SVP30-9	11KW	1468		106	94	82	69						
9		ZJDG(W)-30-94/2	SVP30-10	11KW	1525		118	107	94	78						
10		ZJDG(W)-30-103/2	SVP30-11	15KW	1637		132	118	103	84						
11		ZJDG(W)-30-114/2	SVP30-12	15KW	1694		147	131	114	93						

ZJDG (W) 智能静音叠压供水设备 (卧式)

ADDITIVE PRESSURE WATER SUPPLY EQUIPMENT

BASIC PARAMETERS 基本参数

ZJDG SERIES(一用一备)

序号	参考户数	设备型号	单泵型号	单泵功率	泵+电机长度 (mm)	总流量 (m³/h)	扬程 (m)				外形尺寸 (mm) L*W*H	地脚螺栓中心距 A*B (mm)	地脚螺栓	进出口法兰尺寸		稳流罐尺寸 (mm)
							32	36	40	42				进口DN1	出口DN2	
1	330	ZJDG(W)-40-11/2	SVP40-2	3KW	892	扬程 (m)	20	16	11	10	2100*780*2360	960*405	4-M24	125	80	Φ600*1600
2		ZJDG(W)-40-17/2	SVP40-3	3.7KW	1013		28	23	17	15						
3		ZJDG(W)-40-25/2	SVP40-4	5.5KW	1146		40	33	25	21						
4		ZJDG(W)-40-30/2	SVP40-5	7.5KW	1170		47	37	30	24						
5		ZJDG(W)-40-36/2	SVP40-6	7.5KW	1227		56	47	36	30						
6		ZJDG(W)-40-44/2	SVP40-7	9.2KW	1309		65	56	44	37						
7		ZJDG(W)-40-53/2	SVP40-8	9.2KW	1366		78	65	53	45						
8		ZJDG(W)-40-58/2	SVP40-9	11KW	1468		85	73	58	53						
9		ZJDG(W)-40-63/2	SVP40-10	11KW	1525		93	78	63	57						
10		ZJDG(W)-40-70/2	SVP40-11	15KW	1637		102	85	70	60						
11		ZJDG(W)-40-76/2	SVP40-12	15KW	1694		110	93	76	66						
12		ZJDG(W)-40-84/2	SVP40-13	15KW	1751		120	103	84	74	2400*780*2360					

序号	参考户数	设备型号	单泵型号	单泵功率	泵+电机长度 (mm)	总流量 (m³/h)	扬程 (m)				外形尺寸 (mm) L*W*H	地脚螺栓中心距 A*B (mm)	地脚螺栓	进出口法兰尺寸		稳流罐尺寸 (mm)	
							40	42	46	50				52	进口DN1		出口DN2
1	480	ZJDG(W)-50-24/2	SVP50-2	3.7KW	938	扬程 (m)	30	28	26	24	22	2100*780*2360	960*405	4-M24	150	100	Φ600*1600
2		ZJDG(W)-50-31/2	SVP50-3	5.5KW	1071		41	40	35	31	30						
3		ZJDG(W)-50-38/2	SVP50-4	7.5KW	1104		51	50	44	38	35						
4		ZJDG(W)-50-47/2	SVP50-5	7.5KW	1161		63	60	55	47	43						
5		ZJDG(W)-50-57/2	SVP50-6	11KW	1288		76	74	66	57	53						
6		ZJDG(W)-50-64/2	SVP50-7	11KW	1345		90	85	75	64	59						
7		ZJDG(W)-50-70/2	SVP50-8	15KW	1457		102	96	84	70	65						
8		ZJDG(W)-50-80/2	SVP50-9	15KW	1514		119	112	97	80	73						

序号	参考户数	设备型号	单泵型号	单泵功率	泵+电机长度 (mm)	总流量 (m³/h)	扬程 (m)				外形尺寸 (mm) L*W*H	地脚螺栓中心距 A*B (mm)	地脚螺栓	进出口法兰尺寸		稳流罐尺寸 (mm)	
							50	55	60	65				70	进口DN1		出口DN2
1	600	ZJDG(W)-60-21/2	SVP60-2	5.5KW	1024	扬程 (m)	29	25	21	18	15	2100*780*2360	960*405	4-M24	200	125	Φ600*1600
2		ZJDG(W)-60-30/2	SVP60-3	7.5KW	1060		38	34	30	25	20						
3		ZJDG(W)-60-40/2	SVP60-4	7.5KW	1120		52	46	40	35	27						
4		ZJDG(W)-60-48/2	SVP60-5	11KW	1250		64	56	48	42	34						
5		ZJDG(W)-60-57/2	SVP60-6	11KW	1310		75	66	57	47	38						
6		ZJDG(W)-60-66/2	SVP60-7	15KW	1425		86	77	66	55	45						
7		ZJDG(W)-60-76/2	SVP60-8	18.5KW	1560		100	88	76	63	50						

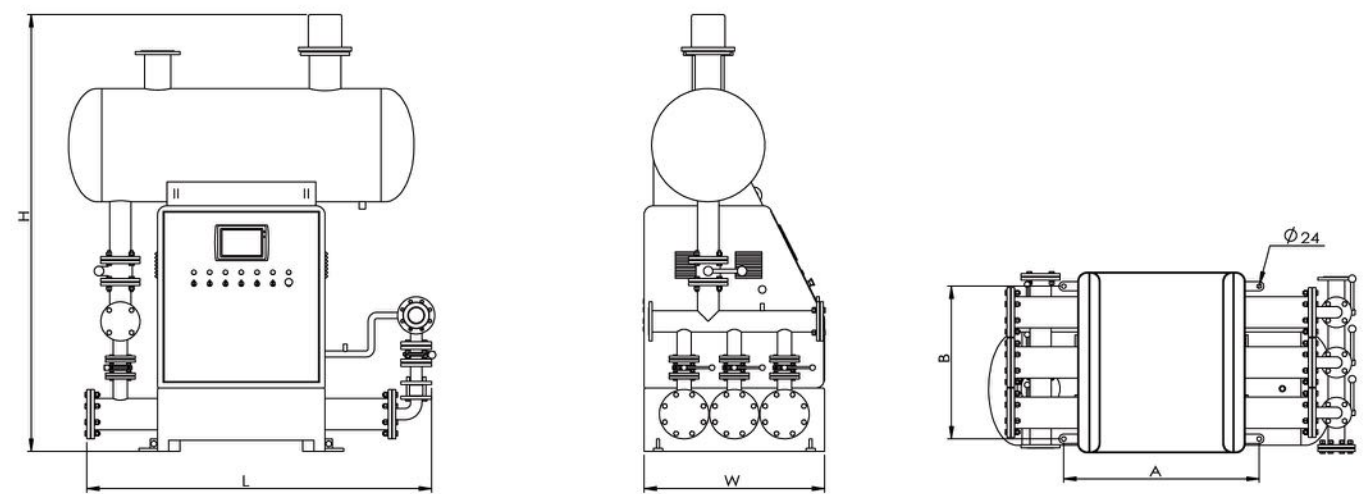
序号	参考户数	设备型号	单泵型号	单泵功率	泵+电机长度 (mm)	总流量 (m³/h)	扬程 (m)				外形尺寸 (mm) L*W*H	地脚螺栓中心距 A*B (mm)	地脚螺栓	进出口法兰尺寸		稳流罐尺寸 (mm)	
							60	64	68	70				72	进口DN1		出口DN2
1	720	ZJDG(W)-70-10/2	SVP70-1	3.7KW	888	扬程 (m)	14	13	11	10	9	2100*780*2360	960*405	4-M24	200	125	Φ600*1600
2		ZJDG(W)-70-16/2	SVP70-2	5.5KW	971		21	19	17	16	15						
3		ZJDG(W)-70-20/2	SVP70-3	7.5KW	1060		28	25	22	20	18						
4		ZJDG(W)-70-27/2	SVP70-4	11KW	1190		40	35	30	27	25						
5		ZJDG(W)-70-33/2	SVP70-5	11KW	1250		47	42	36	33	30						
6		ZJDG(W)-70-40/2	SVP70-6	15KW	1365		58	52	44	40	36						
7		ZJDG(W)-70-47/2	SVP70-7	18.5KW	1500		69	60	53	47	44						
8		ZJDG(W)-70-56/2	SVP70-8	18.5KW	1560		80	71	62	56	52						

ZJDG (W) 智能静音叠压供水设备 (卧式)

ADDITIVE PRESSURE WATER SUPPLY EQUIPMENT

INSTALLATION INSTRUCTION 安装示意图

ZJDG(W)二用一备



BASIC PARAMETERS 基本参数

ZJDG SERIES(二用一备)

序号	参考户数	设备型号	单泵型号	单泵功率	泵+电机长度 (mm)	总流量 (m³/h)	扬程 (m)					外形尺寸 (mm) L*W*H	地脚螺栓中心距 A*B (mm)	地脚螺栓	进出口法兰尺寸		稳流罐尺寸 (mm)
							8.4	9.2	10	10.8	11.6				进口DN1	出口DN2	
1	35	ZJDG(W)-5-15/3	SVP-504	0.37KW	485	扬程 (m)	18	17	15	13	10	2100*1055*2360	960*710	4-M24	65	50	Φ600*1600
2		ZJDG(W)-5-27/3	SVP-506	0.55KW	557		30	29	27	28	20						
3		ZJDG(W)-5-34/3	SVP-508	0.75KW	619		38	36	34	30	25						
4		ZJDG(W)-5-52/3	SVP-512	1.1KW	748		58	54	52	48	40						
5		ZJDG(W)-5-68/3	SVP-517	1.5KW	915		77	72	68	62	53						
6		ZJDG(W)-5-85/3	SVP-521	1.8KW	1011		97	92	85	78	67						
7		ZJDG(W)-5-96/3	SVP-525	2.2KW	1103		113	105	96	91	78						
8		ZJDG(W)-5-135/3	SVP-533	3KW	1402		155	145	135	124	103						

序号	参考户数	设备型号	单泵型号	单泵功率	泵+电机长度 (mm)	总流量 (m³/h)	扬程 (m)				外形尺寸 (mm) L*W*H	地脚螺栓中心距 A*B (mm)	地脚螺栓	进出口法兰尺寸		稳流罐尺寸 (mm)
							12	14	16	18				进口DN1	出口DN2	
1	80	ZJDG(W)-8-20/3	SVP-805	0.75KW	697	扬程 (m)	23	22	20	17	2100*1055*2360	960*710	4-M24	65	50	Φ600*1600
2		ZJDG(W)-8-28/3	SVP-807	1.1KW	826		32	30	28	25						
3		ZJDG(W)-8-40/3	SVP-810	1.5KW	1014		46	44	40	35						
4		ZJDG(W)-8-48/3	SVP-812	1.8KW	1110		56	53	48	42						
5		ZJDG(W)-8-59/3	SVP-815	2.2KW	1244		68	65	59	52						
6		ZJDG(W)-8-72/3	SVP-818	3KW	1501		82	78	72	63						

ZJDG (W) 智能静音叠压供水设备 (卧式)

ADDITIVE PRESSURE WATER SUPPLY EQUIPMENT

BASIC PARAMETERS 基本参数

ZJDG SERIES(二用一备)

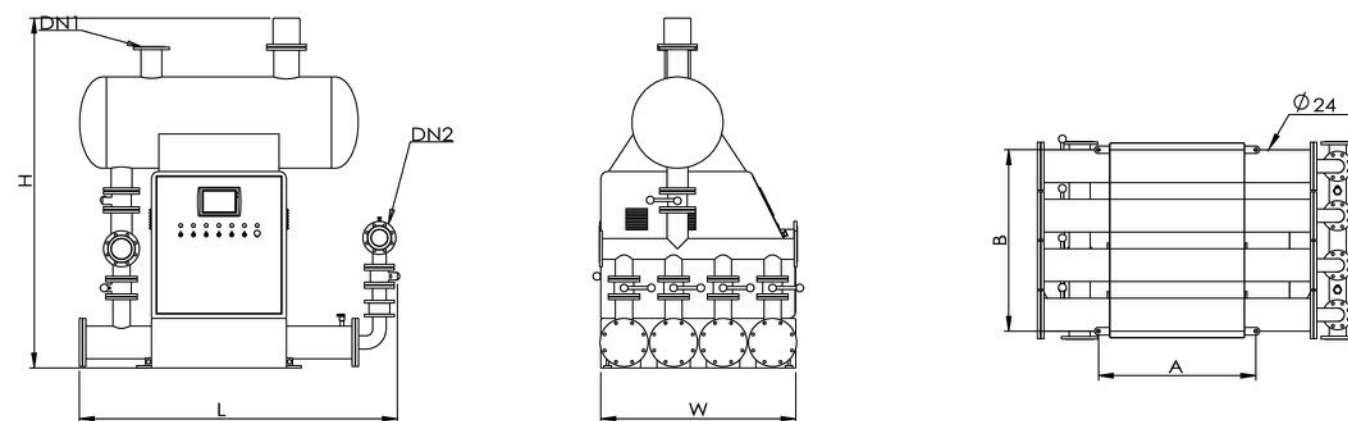
序号	参考户数	设备型号	单泵型号	单泵功率	泵+电机长度 (mm)	总流量 (m³/h)	外形尺寸(mm)					地脚螺栓中心距 A*B (mm)	地脚螺栓	进出口法兰尺寸		稳流罐尺寸 (mm)	
							L*W*H							进口DN1	出口DN2		
1	1800	ZJDG(W)-70-10/3	SVP70-1	3.7KW	888	扬程 (m)	14	13	11	10	9	2580*1055*2360	960*710	4-M24	200	150	Φ600*1600
2		ZJDG(W)-70-16/3	SVP70-2	5.5KW	971		21	19	17	16	15						
3		ZJDG(W)-70-20/3	SVP70-3	7.5KW	1060		28	25	22	20	18						
4		ZJDG(W)-70-27/3	SVP70-4	11KW	1190		40	35	30	27	25						
5		ZJDG(W)-70-33/3	SVP70-5	11KW	1250		47	42	36	33	30						
6		ZJDG(W)-70-40/3	SVP70-6	15KW	1365		58	52	44	40	36						
7		ZJDG(W)-70-47/3	SVP70-7	18.5KW	1500		69	60	53	47	44						
8		ZJDG(W)-70-56/3	SVP70-8	18.5KW	1560		80	71	62	56	52						

ZJDG (W) 智能静音叠压供水设备 (卧式)

ADDITIVE PRESSURE WATER SUPPLY EQUIPMENT

INSTALLATION INSTRUCTION 安装示意图

ZJDG(W)三用一备



BASIC PARAMETERS 基本参数

ZJDG SERIES(三用一备)

序号	参考户数	设备型号	单泵型号	单泵功率	泵+电机长度 (mm)	总流量 (m³/h)	外形尺寸(mm)					地脚螺栓中心距 A*B (mm)	地脚螺栓	进出口法兰尺寸		稳流罐尺寸 (mm)	
							L*W*H							进口DN1	出口DN2		
1	60	ZJDG(W)-5-15/4	SVP-504	3.7KW	485	扬程 (m)	12.6	13.8	15	16.2	17.4	2000*1352*2360	960*1040	4-M24	65	50	Φ600*1600
2		ZJDG(W)-5-27/4	SVP-506	5.5KW	557		18	19	27	28	20						
3		ZJDG(W)-5-34/4	SVP-508	7.5KW	619		38	25	34	30	25						
4		ZJDG(W)-5-52/4	SVP-512	11KW	748		58	35	52	48	40						
5		ZJDG(W)-5-68/4	SVP-517	11KW	915		77	42	68	62	53						
6		ZJDG(W)-5-85/4	SVP-521	15KW	1011		97	52	85	78	67						
7		ZJDG(W)-5-96/4	SVP-525	18.5KW	1103		113	60	96	91	78						
8		ZJDG(W)-5-135/4	SVP-533	18.5KW	1402		155	71	135	124	103						

序号	参考户数	设备型号	单泵型号	单泵功率	泵+电机长度 (mm)	总流量 (m³/h)	外形尺寸(mm)					地脚螺栓中心距 A*B (mm)	地脚螺栓	进出口法兰尺寸		稳流罐尺寸 (mm)	
							L*W*H							进口DN1	出口DN2		
1	150	ZJDG(W)-8-20/4	SVP-805	0.75KW	697	扬程 (m)	18	21	24	27		2000*1352*2360	960*1040	4-M24	100	65	Φ600*1600
2		ZJDG(W)-8-28/4	SVP-807	1.1KW	826		23	22	20	17							
3		ZJDG(W)-8-40/4	SVP-810	1.5KW	1014		32	30	28	25							
4		ZJDG(W)-8-48/4	SVP-812	1.8KW	1110		46	44	40	35							
5		ZJDG(W)-8-59/4	SVP-815	2.2KW	1244		56	53	48	42							
6		ZJDG(W)-8-72/4	SVP-818	3KW	1501		68	65	59	52							
						82	78	72	63								

序号	参考户数	设备型号	单泵型号	单泵功率	泵+电机长度 (mm)	总流量 (m³/h)	外形尺寸(mm)					地脚螺栓中心距 A*B (mm)	地脚螺栓	进出口法兰尺寸		稳流罐尺寸 (mm)	
							L*W*H							进口DN1	出口DN2		
1	170	ZJDG(W)-9-28/4	SVP9-5	2.2KW	896	扬程 (m)	12	21	24	27	30	2100*1440*2360	960*1040	4-M24	100	80	Φ600*1600
2		ZJDG(W)-9-51/4	SVP9-9	3.7KW	1241		50	44	40	28	20						
3		ZJDG(W)-9-77/4	SVP9-13	5.5KW	1455		84	81	70	51	45						
4		ZJDG(W)-9-88/4	SVP9-14	5.5KW	1491		121	115	99	77	60						
5		ZJDG(W)-9-110/4	SVP9-18	7.5KW	1596		138	121	115	88	70						
						170	155	144	110	83	2400*1440*2360					Φ600*1900	

ADDITIVE PRESSURE WATER SUPPLY EQUIPMENT



I、Introduction

U-flo latest patented product solved the problems of large occupied area and high noise which existed in the old equipment. The unique integration structure (integrate the pressure tank, pipe and electric control systems), the unique municipal pipe network protection system and the unique Intelligent Control system constitute the new generation of Intelligent mute inner of pipe additive pressure water supply equipment.

尤孚最新专利产品，解决了原叠压设备占地大、噪音大的问题。以独特的一体化结构（把稳流罐、泵稳流套、稳压罐及电控系统集成于一体）独特的市政管网保护系统独特的智能控制系统，构成了新一代的智能静音管中型叠压供水设备。

It is mainly used in the water supply of the new tall building, high-rise residential community, office buildings, hotels, schools, and other civil constructions, the renovation projects of the pneumatic, pool, water tank water supply equipment. Especially suitable for the water supply of the high-grade residential, Villa community, where require the high environmental requirements, no noise, no vibration, small space cover and high configuration.

主要适用于新建的高层、小高层住宅小区、办公楼、宾馆、学校等民用建筑的生活用水；原有气压式、水池、水箱式供水设备的改造工程。特别适用于使用环境要求高、无噪音、无震动、占地小、配置高的高档住宅、别墅小区的生活用水。

ZJDG (L) 智能静音叠压供水设备 (立式)

ADDITIVE PRESSURE WATER SUPPLY EQUIPMENT

II、Model Instruction 型号意义

ZJDG(W)/(L)-XX-XX/X

X	Pump quantity	水泵数量
XX	Head	扬程
XX	Single pump rated flow	单台泵额定流量
ZJDG(W)	Additive Pressure Water Supply Equipment(Horizontal)	智能静音叠压供水设备 (卧式)
ZJDG(L)	Additive Pressure Water Supply Equipment(Vertical)	智能静音叠压供水设备 (立式)

III、Performance parameters 性能参数

○Flow Range: 0-1000m ³ /h	○流量范围: 0-1000m ³ /h
○Pressure range: 0-2.5MPa	○压力范围: 0-2.5MPa
○Pressure regulation accuracy ≤ 0.01 MPa	○压力调节精度: ≤ 0.01 MPa
○Single motor capacity ≤ 110KW	○电机单机容量: ≤ 110KW
○Power: 380V ± 10% 50HZ ± 5%	○电源: 380V ± 10% 50HZ ± 5%
○Temperature: 0 - 40°C	○温度: 0 - 40°C
○Humidity: can be run in wet conditions (except electronic control parts)	○湿度: 可在潮湿环境下运行 (电控部分另外布置)
○Environment: Indoor non-corrosive, non-mist, non-conductive dust	○环境: 室内无腐蚀性、无油雾、无导电尘埃。

IV、CONFIGURATION 配置

1. Pump: Adopt U.S. U-FLO stainless steel SVP Safe-noise pump, U.S. U-flo Full stainless steel encapsuled water-filled motor.	1. 水泵: 选用美国 U-FLO 全不锈钢 SVP 静音泵, 美国 U-FLO 全不锈钢屏蔽式充水电机。
2. Frequency Converter: ABB (Standard), DANFOSS/FUJI(Optional)	2. 变频器: ABB(标配), 丹佛斯/富士(选配)
3. Pressure sensor: DANFOSS(Standard), COLLIHIGH(Optional) Electric contact pressure gauge	3. 压力传感器: 丹佛斯(标配), 昆仑海岸(选配) 电接点压力表
4. Touchscreen: VEINVIEW(Standard), SIEMENS(Optional)	4. 触摸屏: VEINVIEW(标配), SIEMENS(选配)
5. Programmable logic controller module: SIEMENS(Standard), MITSUBISHI(Optional)	5. 可编程控制器模块: SIEMENS(标配), 三菱(选配)
6. Components such as electrical equipment and switches: SCHNEIDER(Standard), SIEMENS(Optional)	6. 电气、开关等元器件: SCHNEIDER(标配), SIEMENS(选配)
7. Control cabinet: 304 stainless steel custom drawer type	7. 控制柜: 304 不锈钢定制抽屉式控制柜
8. Pressure tank: ITALY AQUAFILL	8. 压力罐: 意大利 AQUAFILL
9. Valve: U-FLO all stainless steel custom integrated valve	9. 阀门: U-FLO 全不锈钢定制一体式阀门。

Water supply equipment can be equipped with remote monitoring module, monitoring interface provided by our company are divided into two types of Ethernet, wireless network; Ethernet interface, the user needs to provide 1 broadband network; wireless network interface, users need to provide mobile SIM card, and ensure the equipment environment mobile signal coverage. Any one form, the user can be self monitoring, and we also can provide monitoring. Monitoring content includes: the pipe pressure, pump status, current frequency, remote start stop, remote reset, etc.

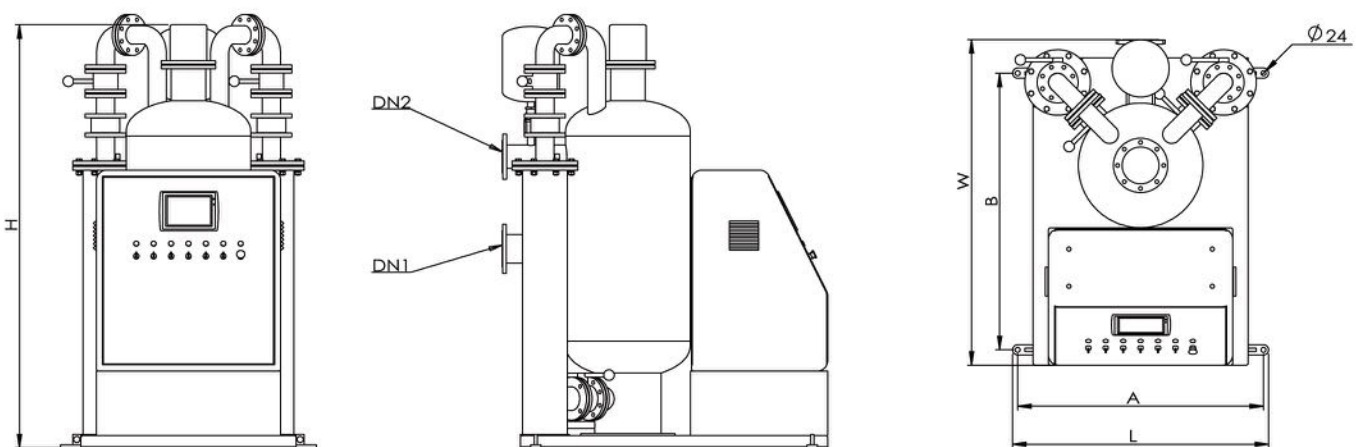
供水设备可选配远程监控组件, 我公司提供的监控接口分为以太网、无线网两种形式; 选择以太网接口, 用户需要提供 1 根开通宽带的网线; 选择无线网接口, 用户需提供移动 SIM 卡, 并保证设备环境有移动信号覆盖。任意一种形式, 用户均可自行监控, 且我公司也可以代为监控。监控内容包含: 管网压力、水泵状态、当前频率、远程启停、远程复位等。

ZJDG (L) 智能静音叠压供水设备 (立式)

ADDITIVE PRESSURE WATER SUPPLY EQUIPMENT

INSTALLATION INSTRUCTION 安装示意图

ZJDG(L)-一用一备



BASIC PARAMETERS 基本参数

ZJDG SERIES (一用一备)

序号	参考户数	设备型号	单泵型号	单泵功率	泵+电机长度 (mm)	总流量 (m³/h)	外形尺寸(mm)					地脚螺栓中心距 A'B (mm)	地脚螺栓	进出口法兰尺寸		稳流罐尺寸 (mm)	
							L*W*H							进口DN1	出口DN2		
1	15	ZJDG(L)-5-15/2	SVP-504	0.37KW	485	扬程 (m)	4.2	4.6	5	5.4	5.8	1170*2000*2240	1100*1540	4-M24	65	50	Φ600*1600
2		ZJDG(L)-5-27/2	SVP-506	0.55KW	557		18	17	15	13	10						
3		ZJDG(L)-5-34/2	SVP-508	0.75KW	619		30	29	27	28	20						
4		ZJDG(L)-5-52/2	SVP-512	1.1KW	748		38	36	34	30	25						
5		ZJDG(L)-5-68/2	SVP-517	1.5KW	915		58	54	52	48	40						
6		ZJDG(L)-5-85/2	SVP-521	1.8KW	1011		77	72	68	62	53						
7		ZJDG(L)-5-96/2	SVP-525	2.2KW	1103		97	92	85	78	67						
8		ZJDG(L)-5-135/2	SVP-533	3KW	1402		113	105	96	91	78						

序号	参考户数	设备型号	单泵型号	单泵功率	泵+电机长度 (mm)	总流量 (m³/h)	外形尺寸(mm)				地脚螺栓中心距 A'B (mm)	地脚螺栓	进出口法兰尺寸		稳流罐尺寸 (mm)	
							L*W*H						进口DN1	出口DN2		
1	25	ZJDG(L)-8-20/2	SVP-805	0.75KW	697	扬程 (m)	6	7	8	9	1170*2000*2240	1100*1540	4-M24	65	50	Φ600*1600
2		ZJDG(L)-8-28/2	SVP-807	1.1KW	826		23	22	20	17						
3		ZJDG(L)-8-40/2	SVP-810	1.5KW	1014		32	30	28	25						
4		ZJDG(L)-8-48/2	SVP-812	1.8KW	1110		46	44	40	35						
5		ZJDG(L)-8-59/2	SVP-815	2.2KW	1244		56	53	48	42						
6		ZJDG(L)-8-72/2	SVP-818	3KW	1501		68	65	59	52						

序号	参考户数	设备型号	单泵型号	单泵功率	泵+电机长度 (mm)	总流量 (m³/h)	外形尺寸(mm)					地脚螺栓中心距 A'B (mm)	地脚螺栓	进出口法兰尺寸		稳流罐尺寸 (mm)	
							L*W*H							进口DN1	出口DN2		
1	35	ZJDG(L)-9-28/2	SVP9-5	2.2KW	896	扬程 (m)	6	7	8	9	10	1170*2000*2400	1100*1540	4-M24	65	50	Φ600*1600
2		ZJDG(L)-9-51/2	SVP9-9	3.7KW	1241		50	44	40	28	20						
3		ZJDG(L)-9-77/2	SVP9-13	5.5KW	1455		84	81	70	51	45						
4		ZJDG(L)-9-88/2	SVP9-14	5.5KW	1491		121	115	99	77	60						
5		ZJDG(L)-9-110/2	SVP9-18	7.5KW	1596		138	121	115	88	70						

ZJDG (L) 智能静音叠压供水设备 (立式)

ADDITIVE PRESSURE WATER SUPPLY EQUIPMENT

BASIC PARAMETERS 基本参数

ZJDG SERIES (一用一备)

序号	参考户数	设备型号	单泵型号	单泵功率	泵+电机长度 (mm)	总流量 (m³/h)	外形尺寸(mm)					地脚螺栓中心距 A'B (mm)	地脚螺栓	进出口法兰尺寸		稳流罐尺寸 (mm)	
							L*W*H							进口DN1	出口DN2		
1	50	ZJDG(L)-13-26/2	SVP13-3	2.2KW	824	扬程 (m)	11	12	13	14	15	1170*2000*2400	1100*1540	4-M24	65	50	Φ600*1600
2		ZJDG(L)-13-43/2	SVP13-5	3.7KW	1097		30	28	26	21	18						
3		ZJDG(L)-13-54/2	SVP13-6	3.7KW	1133		50	46	43	36	30						
4		ZJDG(L)-13-74/2	SVP13-8	5.5KW	1260		65	58	54	45	40						
5		ZJDG(L)-13-99/2	SVP13-11	7.5KW	1344		80	77	74	63	55						
6		ZJDG(L)-13-111/2	SVP13-12	7.5KW	1380		110	102	99	82	75						

序号	参考户数	设备型号	单泵型号	单泵功率	泵+电机长度 (mm)	总流量 (m³/h)	外形尺寸(mm)				地脚螺栓中心距 A'B (mm)	地脚螺栓	进出口法兰尺寸		稳流罐尺寸 (mm)	
							L*W*H						进口DN1	出口DN2		
1	80	ZJDG(L)-17-30/2	SVP17-4	3KW	968	扬程 (m)	13	15	17	19	1170*2000*2400	1100*1540	4-M24	65	50	Φ600*1600
2		ZJDG(L)-17-40/2	SVP17-5	3KW	1016		42	36	30	24						
3		ZJDG(L)-17-47/2	SVP17-6	3.7KW	1172		53	47	40	30						
4		ZJDG(L)-17-51/2	SVP17-7	5.5KW	1251		62	55	47	36						
5		ZJDG(L)-17-59/2	SVP17-8	5.5KW	1298		69	60	51	40						
6		ZJDG(L)-17-65/2	SVP17-9	5.5KW	1346		79	70	59	45						
7		ZJDG(L)-17-70/2	SVP17-10	5.5KW	1346		86	75	65	50						
8		ZJDG(L)-17-74/2	SVP17-11	7.5KW	1417		93	80	70	54						
9		ZJDG(L)-17-82/2	SVP17-13	7.5KW	1503		100	87	74	58						
10		ZJDG(L)-17-95/2	SVP17-14	7.5KW	1550		113	98	82	65						
11		ZJDG(L)-17-108/2	SVP17-15	11KW	1668		131	113	95	75						

序号	参考户数	设备型号	单泵型号	单泵功率	泵+电机长度 (mm)	总流量 (m³/h)	外形尺寸(mm)				地脚螺栓中心距 A'B (mm)	地脚螺栓	进出口法兰尺寸		稳流罐尺寸 (mm)	
							L*W*H						进口DN1	出口DN2		
1	150	ZJDG(L)-25-20/2	SVP25-2	2.2KW	761	扬程 (m)	15	20	25	30	1170*2000*2400	1100*1540	4-M24	100	80	Φ600*1600
2		ZJDG(L)-25-28/2	SVP25-3	3KW	949		26	24	20	15						
3		ZJDG(L)-25-37/2	SVP25-4	3.7KW	1070		40	35	28	20						
4		ZJDG(L)-25-44/2	SVP25-5	5.5KW	1203		53	46	37	25						
5		ZJDG(L)-25-50/2	SVP25-6	5.5KW	1260		63	55	44	30						
6		ZJDG(L)-25-57/2	SVP25-7	7.5KW	1284		74	64	50	35						
7		ZJDG(L)-25-70/2	SVP25-8	7.5KW	1341		84	72	57	41						
8		ZJDG(L)-25-77/2	SVP25-9	9.2KW	1423		97	85	70	50						
9		ZJDG(L)-25-88/2	SVP25-10	11KW	1525		107	95	77	56						
10		ZJDG(L)-25-94/2	SVP25-11	11KW	1582		120	106	88	66						
11		ZJDG(L)-25-104/2	SVP25-12	15KW	1694		130	115	94	70						
12		ZJDG(L)-25-115/2	SVP25-13	15KW	1751		145	127	104	75						

序号	参考户数	设备型号	单泵型号	单泵功率	泵+电机长度 (mm)	总流量 (m³/h)	外形尺寸(mm)				地脚螺栓中心距 A'B (mm)	地脚螺栓	进出口法兰尺寸		稳流罐尺寸 (mm)	
							L*W*H						进口DN1	出口DN2		
1	240	ZJDG(L)-30-18/2	SVP30-2	2.2KW	761	扬程 (m)	22	26	30	34	1170*2000*2400	1100*1540	4-M24	100	80	Φ600*1600
2		ZJDG(L)-30-26/2	SVP30-3	3.7KW	1013		22	20	18	14						
3		ZJDG(L)-30-35/2	SVP30-4	5.5KW	1146		35	31	26	20						
4		ZJDG(L)-30-44/2	SVP30-5	7.5KW	1170		46	41	35	27						
5		ZJDG(L)-30-53/2	SVP30-6	7.5KW	1227		58	51	44	35						
6		ZJDG(L)-30-63/2	SVP30-7	9.2KW	1309		68	61	53	43						
7		ZJDG(L)-30-72/2	SVP30-8	9.2KW	1366		83	73	63	51						
8		ZJDG(L)-30-82/2	SVP30-9	11KW	1468		94	84	72	59						
9		ZJDG(L)-30-94/2	SVP30-10	11KW	1525		106	94	82	69						
10		ZJDG(L)-30-103/2	SVP30-11	15KW	1637		118	107	94	78						
11		ZJDG(L)-30-114/2	SVP30-12	15KW	1694		132	118	103	84						

ZJDG (L) 智能静音叠压供水设备 (立式)

ADDITIVE PRESSURE WATER SUPPLY EQUIPMENT

BASIC PARAMETERS 基本参数

ZJDG SERIES (一用一备)

序号	参考户数	设备型号	单泵型号	单泵功率	泵+电机长度 (mm)	总流量 (m³/h)	扬程 (m)				外形尺寸(mm) L*W*H	地脚螺栓 中心距 A*B (mm)	地脚螺栓	进出口法兰尺寸		稳流罐尺寸 (mm)
							32	36	40	42				进口DN1	出口DN2	
1	330	ZJDG(L)-40-11/2	SVP40-2	3KW	892	扬程 (m)	20	16	11	10	1170*2000*2400	1100*1540	4-M24	125	80	Φ600*1600
2		ZJDG(L)-40-17/2	SVP40-3	3.7KW	1013		28	23	17	15						
3		ZJDG(L)-40-25/2	SVP40-4	5.5KW	1146		40	33	25	21						
4		ZJDG(L)-40-30/2	SVP40-5	7.5KW	1170		47	37	30	24						
5		ZJDG(L)-40-36/2	SVP40-6	7.5KW	1227		56	47	36	30						
6		ZJDG(L)-40-44/2	SVP40-7	9.2KW	1309		65	56	44	37						
7		ZJDG(L)-40-53/2	SVP40-8	9.2KW	1366		78	65	53	45						
8		ZJDG(L)-40-58/2	SVP40-9	11KW	1468		85	73	58	53						
9		ZJDG(L)-40-63/2	SVP40-10	11KW	1525		93	78	63	57						
10		ZJDG(L)-40-70/2	SVP40-11	15KW	1637		102	85	70	60						
11		ZJDG(L)-40-76/2	SVP40-12	15KW	1694		110	93	76	66						
12		ZJDG(L)-40-84/2	SVP40-13	15KW	1751		120	103	84	74						

序号	参考户数	设备型号	单泵型号	单泵功率	泵+电机长度 (mm)	总流量 (m³/h)	扬程 (m)				外形尺寸(mm) L*W*H	地脚螺栓 中心距 A*B (mm)	地脚螺栓	进出口法兰尺寸		稳流罐尺寸 (mm)	
							40	42	46	50				52	进口DN1		出口DN2
1	480	ZJDG(L)-50-24/2	SVP50-2	3.7KW	938	扬程 (m)	30	28	26	24	1170*2000*2400	1100*1540	4-M24	150	100	Φ600*1600	
2		ZJDG(L)-50-31/2	SVP50-3	5.5KW	1071		41	40	35	31							30
3		ZJDG(L)-50-38/2	SVP50-4	7.5KW	1104		51	50	44	38							35
4		ZJDG(L)-50-47/2	SVP50-5	7.5KW	1161		63	60	55	47							43
5		ZJDG(L)-50-57/2	SVP50-6	11KW	1288		76	74	66	57							53
6		ZJDG(L)-50-64/2	SVP50-7	11KW	1345		90	85	75	64							59
7		ZJDG(L)-50-70/2	SVP50-8	15KW	1457		102	96	84	70							65
8		ZJDG(L)-50-80/2	SVP50-9	15KW	1514		119	112	97	80							73

序号	参考户数	设备型号	单泵型号	单泵功率	泵+电机长度 (mm)	总流量 (m³/h)	扬程 (m)				外形尺寸(mm) L*W*H	地脚螺栓 中心距 A*B (mm)	地脚螺栓	进出口法兰尺寸		稳流罐尺寸 (mm)	
							50	55	60	65				70	进口DN1		出口DN2
1	600	ZJDG(L)-60-21/2	SVP60-2	5.5KW	1024	扬程 (m)	29	25	21	18	1170*2000*2400	1100*1540	4-M24	200	125	Φ600*1600	
2		ZJDG(L)-60-30/2	SVP60-3	7.5KW	1060		38	34	30	25							20
3		ZJDG(L)-60-40/2	SVP60-4	7.5KW	1120		52	46	40	35							27
4		ZJDG(L)-60-48/2	SVP60-5	11KW	1250		64	56	48	42							34
5		ZJDG(L)-60-57/2	SVP60-6	11KW	1310		75	66	57	47							38
6		ZJDG(L)-60-66/2	SVP60-7	15KW	1425		86	77	66	55							45
7		ZJDG(L)-60-76/2	SVP60-8	18.5KW	1560		100	88	76	63							50

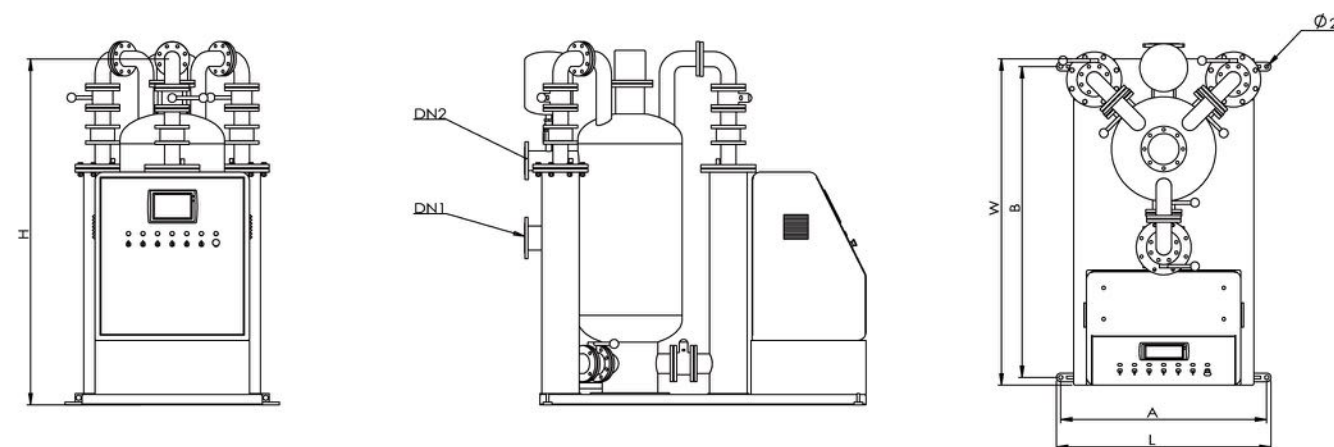
序号	参考户数	设备型号	单泵型号	单泵功率	泵+电机长度 (mm)	总流量 (m³/h)	扬程 (m)				外形尺寸(mm) L*W*H	地脚螺栓 中心距 A*B (mm)	地脚螺栓	进出口法兰尺寸		稳流罐尺寸 (mm)	
							60	64	68	70				72	进口DN1		出口DN2
1	720	ZJDG(L)-70-10/2	SVP70-1	3.7KW	888	扬程 (m)	14	13	11	10	1170*2000*2400	1100*1540	4-M24	200	125	Φ600*1600	
2		ZJDG(L)-70-16/2	SVP70-2	5.5KW	971		21	19	17	16							15
3		ZJDG(L)-70-20/2	SVP70-3	7.5KW	1060		28	25	22	20							18
4		ZJDG(L)-70-27/2	SVP70-4	11KW	1190		40	35	30	27							25
5		ZJDG(L)-70-33/2	SVP70-5	11KW	1250		47	42	36	33							30
6		ZJDG(L)-70-40/2	SVP70-6	15KW	1365		58	52	44	40							36
7		ZJDG(L)-70-47/2	SVP70-7	18.5KW	1500		69	60	53	47							44
8		ZJDG(L)-70-56/2	SVP70-8	18.5KW	1560		80	71	62	56							52

ZJDG (L) 智能静音叠压供水设备 (立式)

ADDITIVE PRESSURE WATER SUPPLY EQUIPMENT

INSTALLATION INSTRUCTION 安装示意图

ZJDG(L)二用一备



BASIC PARAMETERS 基本参数

ZJDG SERIES (二用一备)

序号	参考户数	设备型号	单泵型号	单泵功率	泵+电机长度 (mm)	总流量 (m³/h)	扬程 (m)					外形尺寸(mm) L*W*H	地脚螺栓 中心距 A*B (mm)	地脚螺栓	进出口法兰尺寸		稳流罐尺寸 (mm)
							8.4	9.2	10	10.8	11.6				进口DN1	出口DN2	
1	35	ZJDG(L)-5-15/3	SVP-504	0.37KW	485	扬程 (m)	18	17	15	13	10	1170*2000*2240	1120*1890	4-M24	65	50	Φ600*1600
2		ZJDG(L)-5-27/3	SVP-506	0.55KW	557		30	29	27	28	20						
3		ZJDG(L)-5-34/3	SVP-508	0.75KW	619		38	36	34	30	25						
4		ZJDG(L)-5-52/3	SVP-512	1.1KW	748		58	54	52	48	40						
5		ZJDG(L)-5-68/3	SVP-517	1.5KW	915		77	72	68	62	53						
6		ZJDG(L)-5-85/3	SVP-521	1.8KW	1011		97	92	85	78	67						
7		ZJDG(L)-5-96/3	SVP-525	2.2KW	1103		113	105	96	91	78						
8		ZJDG(L)-5-135/3	SVP-533	3KW	1402		155	145	135	124	103						

序号	参考户数	设备型号	单泵型号	单泵功率	泵+电机长度 (mm)	总流量 (m³/h)	扬程 (m)				外形尺寸(mm) L*W*H	地脚螺栓 中心距 A*B (mm)	地脚螺栓	进出口法兰尺寸		稳流罐尺寸 (mm)
							12	14	16	18				进口DN1	出口DN2	
1	80	ZJDG(L)-8-20/3	SVP-805	0.75KW	697	扬程 (m)	23	22	20	17	1170*2000*2240	1120*1890	4-M24	65	50	Φ600*1600
2		ZJDG(L)-8-28/3	SVP-807	1.1KW	826		32	30	28	25						
3		ZJDG(L)-8-40/3	SVP-810	1.5KW	1014		46	44	40	35						
4		ZJDG(L)-8-48/3	SVP-812	1.8KW	1110		56	53	48	42						
5		ZJDG(L)-8-59/3	SVP-815	2.2KW	1244		68	65	59	52						
6		ZJDG(L)-8-72/3	SVP-818	3KW	1501		82	78	72	63						

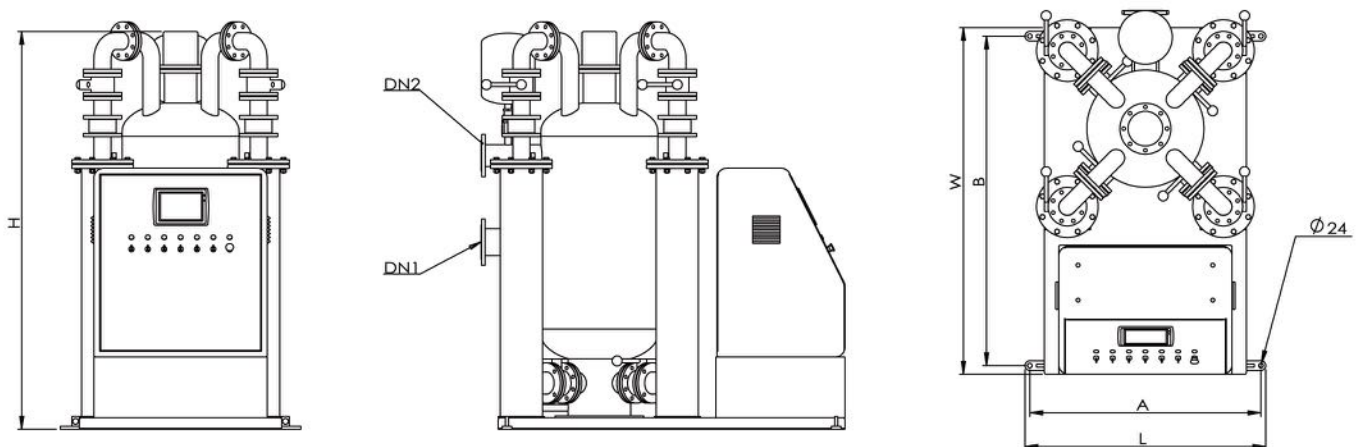
序号	参考户数	设备型号	单泵型号	单泵功率	泵+电机长度 (mm)	总流量 (m³/h)	扬程 (m)					外形尺寸(mm) L*W*H	地脚螺栓 中心距 A*B (mm)	地脚螺栓	进出口法兰尺寸		稳流罐尺寸 (mm)
							12	14	16	18	20				进口DN1	出口DN2	
1	90	ZJDG(L)-9-28/3	SVP9-5	2.2KW	896	扬程 (m)	50	44	40	28	20	1170*2000*2450	1120*1890	4-M24	65	50	Φ600*1600
2		ZJDG(L)-9-51/3	SVP9-9	3.7KW	1241		84	81	70	51	45						
3		ZJDG(L)-9-77/3	SVP9-13	5.5KW	1455		121	115	99	77	60						
4		ZJDG(L)-9-88/3	SVP9-14	5.5KW	1491		138	121	115	88	70						
5		ZJDG(L)-9-110/3	SVP9-18	7.5KW	1596		170	155	144	110	83						

ZJDG (L) 智能静音叠压供水设备 (立式)

ADDITIVE PRESSURE WATER SUPPLY EQUIPMENT

INSTALLATION INSTRUCTION 安装示意图

ZJDG(L)三用一备



BASIC PARAMETERS 基本参数

ZJDG SERIES (三用一备)

序号	参考户数	设备型号	单泵型号	单泵功率	泵+电机长度 (mm)	总流量 (m³/h)	外形尺寸(mm)					地脚螺栓中心距 A*B (mm)	地脚螺栓	进出口法兰尺寸		稳流罐尺寸 (mm)	
							L*W*H							进口DN1	出口DN2		
1	60	ZJDG(L)-5-15/4	SVP-504	0.37KW	485	扬程 (m)	12.6	13.8	15	16.2	17.4	1170*2270*2240	1110*1840	4-M24	65	50	Φ600*1600
2		ZJDG(L)-5-27/4	SVP-506	0.55KW	557		18	17	15	13	10						
3		ZJDG(L)-5-34/4	SVP-508	0.75KW	619		30	29	27	28	20						
4		ZJDG(L)-5-52/4	SVP-512	1.1KW	748		38	36	34	30	25						
5		ZJDG(L)-5-68/4	SVP-517	1.5KW	915		58	54	52	48	40						
6		ZJDG(L)-5-85/4	SVP-521	1.8KW	1011		77	72	68	62	53						
7		ZJDG(L)-5-96/4	SVP-525	2.2KW	1103		97	92	85	78	67						
8		ZJDG(L)-5-135/4	SVP-533	3KW	1402		113	105	96	91	78						
1	150	ZJDG(L)-8-20/4	SVP-805	0.75KW	697	扬程 (m)	18	21	24	27	1170*2270*2240	1110*1840	4-M24	100	65	Φ600*1600	
2		ZJDG(L)-8-28/4	SVP-807	1.1KW	826		23	22	20	17							
3		ZJDG(L)-8-40/4	SVP-810	1.5KW	1014		32	30	28	25							
4		ZJDG(L)-8-48/4	SVP-812	1.8KW	1110		46	44	40	35							
5		ZJDG(L)-8-59/4	SVP-815	2.2KW	1244		56	53	48	42							
6		ZJDG(L)-8-72/4	SVP-818	3KW	1501		68	65	59	52							
1	170	ZJDG(L)-9-28/4	SVP9-5	2.2KW	896	扬程 (m)	18	21	24	27	1170*2270*2440	1110*1840	4-M24	100	65	Φ600*1600	
2		ZJDG(L)-9-51/4	SVP9-9	3.7KW	1241		50	44	40	28							20
3		ZJDG(L)-9-77/4	SVP9-13	5.5KW	1455		84	81	70	51							45
4		ZJDG(L)-9-88/4	SVP9-14	5.5KW	1491		121	115	99	77							60
5		ZJDG(L)-9-110/4	SVP9-18	7.5KW	1596		138	121	115	88							70

ZJDG (L) 智能静音叠压供水设备 (立式)

ADDITIVE PRESSURE WATER SUPPLY EQUIPMENT

BASIC PARAMETERS 基本参数

ZJDG SERIES (三用一备)

序号	参考户数	设备型号	单泵型号	单泵功率	泵+电机长度 (mm)	总流量 (m³/h)	外形尺寸(mm)					地脚螺栓中心距 A*B (mm)	地脚螺栓	进出口法兰尺寸		稳流罐尺寸 (mm)	
							L*W*H							进口DN1	出口DN2		
1	280	ZJDG(L)-13-26/4	SVP13-3	2.2KW	824	扬程 (m)	33	36	39	42	45	1170*2270*2440	1110*1840	4-M24	125	80	Φ600*1600
2		ZJDG(L)-13-43/4	SVP13-5	3.7KW	1097		30	28	26	21	18						
3		ZJDG(L)-13-54/4	SVP13-6	3.7KW	1133		50	46	43	36	30						
4		ZJDG(L)-13-74/4	SVP13-8	5.5KW	1260		65	58	54	45	40						
5		ZJDG(L)-13-99/4	SVP13-11	7.5KW	1344		80	77	74	63	55						
6		ZJDG(L)-13-111/4	SVP13-12	7.5KW	1380		110	102	99	82	75						
1	480	ZJDG(L)-17-30/4	SVP17-4	3KW	968	扬程 (m)	39	45	51	57	1170*2270*2440	1110*1840	4-M24	150	100	Φ600*1600	
2		ZJDG(L)-17-40/4	SVP17-5	3KW	1016		42	36	30	24							
3		ZJDG(L)-17-47/4	SVP17-6	3.7KW	1172		53	47	40	30							
4		ZJDG(L)-17-51/4	SVP17-7	5.5KW	1251		62	55	47	36							
5		ZJDG(L)-17-59/4	SVP17-8	5.5KW	1298		69	60	51	40							
6		ZJDG(L)-17-65/4	SVP17-9	5.5KW	1346		79	70	59	45							
7		ZJDG(L)-17-70/4	SVP17-10	5.5KW	1346		86	75	65	50							
8		ZJDG(L)-17-74/4	SVP17-11	7.5KW	1417		93	80	70	54							
9		ZJDG(L)-17-82/4	SVP17-13	7.5KW	1503		100	87	74	58							
10		ZJDG(L)-17-95/4	SVP17-14	7.5KW	1550		113	98	82	65							
11		ZJDG(L)-17-108/4	SVP17-15	11KW	1668		131	113	95	75							
1	720	ZJDG(L)-25-20/4	SVP25-2	2.2KW	761	扬程 (m)	45	60	75	90	1170*2270*2740	1110*1840	4-M24	200	125	Φ600*1600	
2		ZJDG(L)-25-28/4	SVP25-3	3KW	949		26	24	20	15							
3		ZJDG(L)-25-37/4	SVP25-4	3.7KW	1070		40	35	28	20							
4		ZJDG(L)-25-44/4	SVP25-5	5.5KW	1203		53	46	37	25							
5		ZJDG(L)-25-50/4	SVP25-6	5.5KW	1260		63	55	44	30							
6		ZJDG(L)-25-57/4	SVP25-7	7.5KW	1284		74	64	50	35							
7		ZJDG(L)-25-70/4	SVP25-8	7.5KW	1341		84	72	57	41							
8		ZJDG(L)-25-77/4	SVP25-9	9.2KW	1423		97	85	70	50							
9		ZJDG(L)-25-88/4	SVP25-10	11KW	1525		107	95	77	56							
10		ZJDG(L)-25-94/4	SVP25-11	11KW	1582		120	106	88	66							
11		ZJDG(L)-25-104/4	SVP25-12	15KW	1694		130	115	94	70							
12		ZJDG(L)-25-115/4	SVP25-13	15KW	1751		145	127	104	75							
1	1100	ZJDG(L)-30-18/4	SVP30-2	2.2KW	761	扬程 (m)	66	78	90	102	1170*2270*2740	1110*1840	4-M24	200	125	Φ600*1600	
2		ZJDG(L)-30-26/4	SVP30-3	3.7KW	1013		22	20	18	14							
3		ZJDG(L)-30-35/4	SVP30-4	5.5KW	1146		35	31	26	20							
4		ZJDG(L)-30-44/4	SVP30-5	7.5KW	1170		46	41	35	27							
5		ZJDG(L)-30-53/4	SVP30-6	7.5KW	1227		58	51	44	35							
6		ZJDG(L)-30-63/4	SVP30-7	9.2KW	1309		68	61	53	43							
7		ZJDG(L)-30-72/4	SVP30-8	9.2KW	1366		83	73	63	51							
8		ZJDG(L)-30-82/4	SVP30-9	11KW	1468		94	84	72	59							
9		ZJDG(L)-30-94/4	SVP30-10	11KW	1525		106	94	82	69							
10		ZJDG(L)-30-103/4	SVP30-11	15KW	1637		118	107	94	78							
11		ZJDG(L)-30-114/4	SVP30-12	15KW	1694		132	118	103	84							

Company

Products

ZJDG-W

ZJDG-L

Service

ZJDG (L) 智能静音叠压供水设备 (立式)

ADDITIVE PRESSURE WATER SUPPLY EQUIPMENT

BASIC PARAMETERS 基本参数

ZJDG SERIES (三用一备)

序号	参考户数	设备型号	单泵型号	单泵功率	泵+电机长度 (mm)	总流量 (m³/h)	扬程 (m)				外形尺寸(mm) L*W*H	地脚螺栓中心距 A*B (mm)	地脚螺栓	进出口法兰尺寸		稳流罐尺寸 (mm)
							96	108	12	126				进口DN1	出口DN2	
1	1500	ZJDG(L)-40-11/4	SVP40-2	3KW	892	扬程 (m)	20	16	11	10	1170*2270*2440	1100*1840	4-M24	200	150	Φ600*1600
2		ZJDG(L)-40-17/4	SVP40-3	3.7KW	1013		28	23	17	15						
3		ZJDG(L)-40-25/4	SVP40-4	5.5KW	1146		40	33	25	21						
4		ZJDG(L)-40-30/4	SVP40-5	7.5KW	1170		47	37	30	24						
5		ZJDG(L)-40-36/4	SVP40-6	7.5KW	1227		56	47	36	30						
6		ZJDG(L)-40-44/4	SVP40-7	9.2KW	1309		65	56	44	37						
7		ZJDG(L)-40-53/4	SVP40-8	9.2KW	1366		78	65	53	45						
8		ZJDG(L)-40-58/4	SVP40-9	11KW	1468		85	73	58	53						
9		ZJDG(L)-40-63/4	SVP40-10	11KW	1525		93	78	63	57						
10		ZJDG(L)-40-70/4	SVP40-11	15KW	1637		102	85	70	60						
11		ZJDG(L)-40-76/4	SVP40-12	15KW	1694		110	93	76	66						
12		ZJDG(L)-40-84/4	SVP40-13	15KW	1751		120	103	84	74						

序号	参考户数	设备型号	单泵型号	单泵功率	泵+电机长度 (mm)	总流量 (m³/h)	扬程 (m)				外形尺寸(mm) L*W*H	地脚螺栓中心距 A*B (mm)	地脚螺栓	进出口法兰尺寸		稳流罐尺寸 (mm)	
							120	126	138	150				156	进口DN1		出口DN2
1	2000	ZJDG(L)-50-24/4	SVP50-2	3.7KW	938	扬程 (m)	30	28	26	24	22	1170*2270*2440	1100*1840	4-M24	200	150	Φ600*1600
2		ZJDG(L)-50-31/4	SVP50-3	5.5KW	1071		41	40	35	31	30						
3		ZJDG(L)-50-38/4	SVP50-4	7.5KW	1104		51	50	44	38	35						
4		ZJDG(L)-50-47/4	SVP50-5	7.5KW	1161		63	60	55	47	43						
5		ZJDG(L)-50-57/4	SVP50-6	11KW	1288		76	74	66	57	53						
6		ZJDG(L)-50-64/4	SVP50-7	11KW	1345		90	85	75	64	59						
7		ZJDG(L)-50-70/4	SVP50-8	15KW	1457		102	96	84	70	65						
8		ZJDG(L)-50-80/4	SVP50-9	15KW	1514		119	112	97	80	73						

序号	参考户数	设备型号	单泵型号	单泵功率	泵+电机长度 (mm)	总流量 (m³/h)	扬程 (m)				外形尺寸(mm) L*W*H	地脚螺栓中心距 A*B (mm)	地脚螺栓	进出口法兰尺寸		稳流罐尺寸 (mm)	
							150	165	180	195				210	进口DN1		出口DN2
1	2200	ZJDG(L)-60-21/4	SVP60-2	5.5KW	1024	扬程 (m)	29	25	21	18	15	1170*2270*2440	1100*1840	4-M24	200	150	Φ600*1600
2		ZJDG(L)-60-30/4	SVP60-3	7.5KW	1060		38	34	30	25	20						
3		ZJDG(L)-60-40/4	SVP60-4	7.5KW	1120		52	46	40	35	27						
4		ZJDG(L)-60-48/4	SVP60-5	11KW	1250		64	56	48	42	34						
5		ZJDG(L)-60-57/4	SVP60-6	11KW	1310		75	66	57	47	38						
6		ZJDG(L)-60-66/4	SVP60-7	15KW	1425		86	77	66	55	45						
7		ZJDG(L)-60-76/4	SVP60-8	18.5KW	1560		100	88	76	63	50						

序号	参考户数	设备型号	单泵型号	单泵功率	泵+电机长度 (mm)	总流量 (m³/h)	扬程 (m)				外形尺寸(mm) L*W*H	地脚螺栓中心距 A*B (mm)	地脚螺栓	进出口法兰尺寸		稳流罐尺寸 (mm)	
							180	192	204	210				216	进口DN1		出口DN2
1	2500	ZJDG(L)-70-10/4	SVP70-1	3.7KW	888	扬程 (m)	14	13	11	10	9	1170*2270*2440	1100*1840	4-M24	200	150	Φ600*1600
2		ZJDG(L)-70-16/4	SVP70-2	5.5KW	971		21	19	17	16	15						
3		ZJDG(L)-70-20/4	SVP70-3	7.5KW	1060		28	25	22	20	18						
4		ZJDG(L)-70-27/4	SVP70-4	11KW	1190		40	35	30	27	25						
5		ZJDG(L)-70-33/4	SVP70-5	11KW	1250		47	42	36	33	30						
6		ZJDG(L)-70-40/4	SVP70-6	15KW	1365		58	52	44	40	36						
7		ZJDG(L)-70-47/4	SVP70-7	18.5KW	1500		69	60	53	47	44						
8		ZJDG(L)-70-56/4	SVP70-8	18.5KW	1560		80	71	62	56	52						

ZJDG 智能静音叠压供水设备

ADDITIVE PRESSURE WATER SUPPLY EQUIPMENT

Ordering Notice 订货须知:

- Based on the manual we provided, customers can select model as required. The product is supplied in set.
- We can design and supply product according to customer's requirements. The customer just needs to fill the engineering parameters and configuration requirements according to the engineering parameters table in the manual. Our technology department will provide program and offer based on the table.
- Recommended Pump: U-flo SVP safe-noise pump.
- General supply range of complete equipment:

Pipeline components: (from the inlet flange of the steady flow tank to the flanges at the both sides of outlet) The user just connect the inlet flange of the steady flow tank and the flange at the both sides of the outlet pipe of the pump. But the water inlet valve and expansion pipe filters must be installed at the inlet part while the outlet valve must be installed at the outlet part. Our equipment can not be used as the supporting point (make the pipeline support brackets separately).

The main power line: (the route map marked on the door shell of the control box) the user shall connect the main power line to the inlet terminal in the control box.

Power lines and signal lines: Our equipment and control box are connected type (both the power lines and signal lines have been connected). The user can set the wiring way while purchased. The threading pipe or cable bridge can be pre-arranged according to the drawing.

Pump house: The user must provide bright and spacious equipment placement, ensure enough space for equipment and certain maintenance distance. There must be the appropriate lighting and power outlet, drainage to the outside, or sump with sewage pumps. If the humidity of pump house is too big, the dehumidifier shall be provided.

Special Instructions: If the user needs to buy special items, such as expansion pipe filters, backflow prevention device, outlet main valve with flange, electromagnetic flow meter, water disinfectant, dehumidifiers etc, please show the details when ordering.

- 用户可根据我公司提供的样本, 自行选择设备型号, 本产品成套供应。
- 本公司可根据客户的要求进行设计和供货, 用户只须按照客户工程参数表的要求详细填写工程参数和配置要求, 本公司技术部根据此表为客户提供方案和报价。
- 本公司推荐水泵: U-flo SVP 系列静音潜水泵
- 成套设备常规供货范围:

管道件: (稳流调节罐上的进水口法兰至出水总管两侧法兰内为我公司成套供应范围); 用户只须连接稳流调节罐上的进水口法兰及水泵出水总管两侧法兰即可, 但进水部分必须安装进水阀门及伸缩管道过滤器, 出水部分必须安装出水阀门, 并且不能以我公司设备作为支撑点(单独制作管道支撑托架)

主电源线: (我公司控制柜门上标有线路图)。由用户将主电源线联接至控制柜内进线端子上即可
动力线及信号线: 我公司的设备与控制柜是连体型(动力线及信号线均以连接完好)。如用户代购, 布线方式由用户自定自理, 可以按图预先预埋地下穿线管或布置电缆桥架。

泵房: 用户必须提供宽敞明亮的设备安置点, 有足够的地方安置设备和保证有一定的维修间距, 泵房内应有相应的照明和电源插座, 必须有向室外排水的排水点, 或集水坑及排污泵, 如泵房湿度太大必须购置除湿机。

特殊说明: 用户如需选购特殊件: 伸缩管道过滤器、倒流防止器、进出水总阀带法兰、电磁流量计、水质消毒器、除湿机等, 请在订货时详细说明。

ZJDG 智能静音叠压供水设备

ADDITIVE PRESSURE WATER SUPPLY EQUIPMENT



U-FLO—Silent Water Supply Equipment Manufacturer
尤孚——静音供水设备专业制造商

Service commitment服务承诺:

● Pre-sales service:

Free design before signing the contract, choose reasonable, reliable and economical water solution.

● Sales service:

After the signing of the contract, provide the foundation drawings, the installation drawings, control wiring diagram etc.

● After-sales service:

1. After the product acceptance and delivery, provide operator free training which includes equipment functions, operating methods, attentions, routine maintenance, emergency treatment, etc.

2. The guarantee period is one years (from the date of the Contract comes into force). We will repair or replace freely for quality problem under normal use within one years. After Warranty expires, we only charge the cost of maintenance.

3. The customers' 100% satisfaction is the starting point of our work. There are special technical workers for after-sales service to fulfilling our promise. Since the equipment delivery date, we will appoint responsible person for equipment inspection and maintenance. Provide free equipment inspection per quarter permanently. The lifetime service ensures the equipment 100% reliable operation.

Nanjing U-flo pumps Co., Ltd.

● 售前服务:

合同签订前帮助用户免费设计, 选择合理、可靠、节俭的工程供水方案。

● 售中服务:

合同签订后, 提供设备基础图, 安装图, 控制接线图等。

● 售后服务:

1. 产品验收交付后, 免费对用户的操作人员进行系统培训。培训的内容包括: 设备的功能、设备的操作、注意事项、日常维护保养及故障紧急处理等。

2. 设备的保修期为一年(自合同生效日起), 一年内若正常使用出现质量问题所造成的一切故障, 我公司无偿修复更换。保修期满后的维修只收取成本费用。

3. 用户 100% 满意是我们工作的起点。售后服务专人负责, 以实现我们的承诺: 自设备交付使用日起, 我公司专人负责设备的巡检、保养, 将永久性对设备每季度一次免费巡检, 终生服务, 确保用户设备运行 100% 可靠。

南京尤孚泵业有限公司

